



THE CEMETERIES OF THE TAMBAROORA

*A look at the Early Cemeteries of the Tambaroora, eight that are known
not all used but the intention was there*

More Questions than Answers

*Warwick P Taylor
Tambaroora.com*

© 2021

Preface

There are eight known cemeteries which have been referenced in the Tambaroora area in the past, some were used for interments and others although surveyed and gazetted were never used. Each has an interesting story to tell and hopefully the following pages will shed light on either their existence or where they were to be located.

Until recently only three cemeteries were known to exist, the Catholic cemetery, the Chinese cemetery and the General cemetery formerly the Church of England graveyard, all situated within the precincts of Tambaroora township.

It has since been found that a cemetery preceding these cemeteries existed, in 1852 reference was made to a burial ground, possibly for the C of E faith though not confirmed which had 10 interments. Its location is currently under investigation.

Another shown on the 1859 Town survey map of Tambaroora indicated a cemetery on the north eastern side of the Town of unknown denomination.

A small cemetery has been shown on early maps of Bald Hills on the western side of Hill End Creek formerly known as Bald Hills Creek, this cemetery appears to have been located next to the Bullen Bullen bridle track and later known as Warry's Road. A re-alignment of this road later saw it possibly situated over the cemetery.

Later in 1861 a surveyed cemetery was created south east from the Town of Tambaroora, this cemetery was noted as being set aside as the General cemetery of mixed denominations.

A General Cemetery was surveyed in 1873 on the eastern side of Hill End but this was never used.

Again in 1897 yet another General cemetery was surveyed, this time approximately 1.5 kms west of the Town of Tambaroora, it being of mixed denomination.

This could also be the case with the Roman Catholic Cemetery, the location of the first Catholic Church is still unknown but may have been in the vicinity of the Catholic Cemetery.

From the beginning of the occupation of the Church of England Church site in 1854 interments took place, one of the earliest was a young child Margaret Greig Paxton at 1 year and 3 months of age in July 1855, Margaret was of the Presbyterian faith which has confirmed that other Protestant denominations were interred in the Church yard.

Each of these cemeteries is explained in more detail in the following pages.

Contents

<i>Acknowledgement of the Wiradjuri Nation.....</i>	<i>4</i>
<i>Acknowledgements.....</i>	<i>5</i>
<i>Interpretation and definition of words and phrases.....</i>	<i>6</i>
<i>CATHOLIC CEMETERY - Tambaroora.....</i>	<i>7</i>
<i>Notes.....</i>	<i>7</i>
<i>CHINESE CEMETERY.....</i>	<i>12</i>
<i>Notes.....</i>	<i>12</i>
<i>Records Pertaining to the Chinese Cemetery held by Government Organisations.....</i>	<i>14</i>
<i>General Notes Location.....</i>	<i>16</i>
<i>CHURCH OF ENGLAND GRAVEYARD / CEMETERY – The Current Cemetery.....</i>	<i>17</i>
<i>Notes.....</i>	<i>17</i>
<i>The Graveyard / Cemetery - 1854.....</i>	<i>20</i>
<i>Cleaning of the Cemetery – A Community Effort - 1917.....</i>	<i>23</i>
<i>Discovery that the Cemetery was not a Dedicated Cemetery – 1929.....</i>	<i>23</i>
<i>Moves to Gain Control of the Management of the Cemetery - 1944.....</i>	<i>25</i>
<i>Approval Given to Revoke Dedicated C of E Lands and Change to General Cemetery - 1950.....</i>	<i>29</i>
<i>TAMBAROORA GENERAL CEMETERY - 1859.....</i>	<i>33</i>
<i>General Cemetery - Proposed Site - 1859.....</i>	<i>33</i>
<i>TAMBAROORA GENERAL CEMETERY - 1898.....</i>	<i>38</i>
<i>PIONEER CEMETERY - 1852Unknown Denomination.....</i>	<i>44</i>
<i>Identifying the Location.....</i>	<i>44</i>
<i>BALD HILLS CEMETERY.....</i>	<i>52</i>
<i>HILL END CEMETERY.....</i>	<i>56</i>
 <i>Figure 1 - Catholic Cemetery.....</i>	 <i>7</i>
<i>Figure 2 - Location of both the Chinese cemetery and the Catholic cemetery circa 1860.....</i>	<i>8</i>
<i>Figure 3 - Location of both the Chinese cemetery and the Catholic cemetery circa 1860.....</i>	<i>9</i>
<i>Figure 4 - Land Reserved from Sale and Lease Generally.....</i>	<i>10</i>
<i>Figure 5 - Trustees Appointed for Cemetery.....</i>	<i>11</i>
<i>Figure 6 - Cemetery Locations.....</i>	<i>12</i>
<i>Figure 7 - 1898 General, Chinese and Catholic Cemetery Locations.....</i>	<i>13</i>
<i>Figure 8 - Aerial Image of the Chinese Cemetery.....</i>	<i>14</i>
<i>Figure 9 - Church of England Church and Graveyard.....</i>	<i>17</i>
<i>Figure 10 - Meeting of Community Members to plan for the erection of a Church.....</i>	<i>18</i>
<i>Figure 11 - Church Officially Opened.....</i>	<i>19</i>
<i>Figure 12 - Position of the Church and Yard in relation to Section 16 as shown on the 1859 Town Plan.....</i>	<i>20</i>

CEMETERIES OF THE TAMBAROORA

Friday, 26 November 2021

© Warwick P Taylor 2021 – tambaroora.com

Figure 13 - Layout of the Church Yard in relation to Section 16.....	21
Figure 14 - Drone Image showing site of the Church.....	22
Figure 15 - Cleaning of the Cemetery.....	23
Figure 16 - Ongoing Management of the Cemetery.....	24
Figure 17 - Temporary Control of the C of E Cemetery.....	24
Figure 18 - Sketch of Section 16 showing Lots 4 and 5.....	27
Figure 19 - NSWGG Proposal to Resume the Dedicated Lands.....	30
Figure 20 - Trustees Appointed for C of E Portion of the General Cemetery.....	30
Figure 21 - Layout of Proposed General Cemetery's.....	33
Figure 22 - Survey of the Cemetery's Location from the Town.....	34
Figure 23 - NSWGG Lands Dedicated for Public Use.....	35
Figure 24 - Composite Image of Surveyors Measurements overlaid on 1922 Hill End and Tambaroora Map.....	36
Figure 25 - Lot 208 with the Cemetery (dark green shading) located within.....	37
Figure 26 - Satellite Imagery showing the Cemetery overlaid on the actual ground.....	37
Figure 27 - Withdrawal of Land from the Hill End and Tambaroora Temporary Commonage.....	39
Figure 28 - Layout of the Cemetery.....	39
Figure 29 - Location of the General Cemetery.....	41
Figure 30 - Wesleyan Trustees Appointed.....	42
Figure 31 - Church of England Trustees Appointed.....	42
Figure 32 - A cropped area of the 1859 Plan showing proposed allotment boundaries for the Town.....	45
Figure 33 - Satellite image of the Town and area of Interest - (Google Earth Pro [GEP]).....	46
Figure 34 - Cropped area of the 1859 Town Map of Tambaroora showing the area of Interest (Surveyor Price).....	47
Figure 35 - This image shows the 1859 town map overlaid on the GEP satellite image.....	47
Figure 36 - Table of Measurements for the 1859 Tambaroora Town Plan.....	48
Figure 37 - CAD drawing showing the measurements obtained from the surveyors table.....	49
Figure 38 - This image shows the above CAD drawing overlaid on GEP and scaled to match GEP scale.....	50
Figure 39 - Close up view of the CAD drawing and the 1859 Town Map overlaid on GEP.....	51
Figure 40 - 1855 Quartz Claim showing the burying place.....	52
Figure 41 - 1859 Village of Forbes Plan.....	53
Figure 42 - 1894 Village Map showing the Cemetery and track passing to the east of it.....	54
Figure 43 - Gold Lease 144 Application showing the cemetery.....	55
Figure 44 - NSWGG, No.188, Pg.2341, dtd 29 Jul 1874 [1590] – TROVE, National Library of Australia.....	56
Figure 45 - Crown Plan 386 - 1984 showing the layout of the Cemetery.....	57

Acknowledgement of the Wiradjuri Nation as the Traditional Owners

***We would like to acknowledge and pay our respects
to the traditional custodians of this land, the
Wiradjuri People, and pay our respects to the elders
both past, present and emerging, who's land we are
on today***

Acknowledgements

Kelvin F. J. Taylor, for the Imagery and Support

New South Wales Government, for Government Gazettes, Acts and Regulations

TROVE, National Library of Australia, for the references to the NSWGG Gazettes, Newspapers and Publications

Hill End and Tambaroora Gathering Group

<p><i>This is an ongoing Project and contributions or corrections are appreciated and welcome</i></p>

Interpretation and definition of words and phrases

The term graveyard is often used interchangeably with cemetery, but primarily referred to a burial ground within a churchyard ([Wikipedia](#)). While churchyards can be any patch of land on church grounds, historically, they were often used as graveyards (burial places).

CATHOLIC CEMETERY - Tambaroora

Figure 1 - Catholic Cemetery



Image Courtesy of Kelvin Taylor

Notes

This cemetery is a puzzle, in all the documentation found to date relating to the cemetery there has been no specific mention of the denomination of the Catholic cemetery.

A Gold Lease application made in 1896 for Gold Lease 111¹ shows on the application the position of the cemetery in relation to the Gold Lease and a partial survey completed for the southern boundary of the cemetery, no denomination noted. 1908 saw another gold lease application number 230² note the cemetery surveyed within the proposed gold lease, mention being made that the land was reserved but no denomination mentioned. Again in 1936 an application for gold lease 435³ shows the cemetery and surveyed measurements with a notation “[Cemetery. Fenced with netting R50760-1 for Cemetery not'd 23.8.15](#)”, the fence line lengths as recorded were confirmed in 2017 by Kelvin Taylor using GPS and surveyors measuring wheel. Again, no denomination mentioned.

As said previously no mention has been made of the denomination of the cemetery on any documentation, yet the surveyor has recorded the Chinese cemetery and the Catholic and Presbyterian Churches by denomination on the same 1859 Plan. This could suggest that the Catholic cemetery began as a general cemetery.

¹ Plan of Portion GL111, Application No.1758, G11513

² Plan of Portion GL230, Application No. 40, G17360

³ Plan of Portion GL435, Application No.531, G22372

CEMETERIES OF THE TAMBAROORA

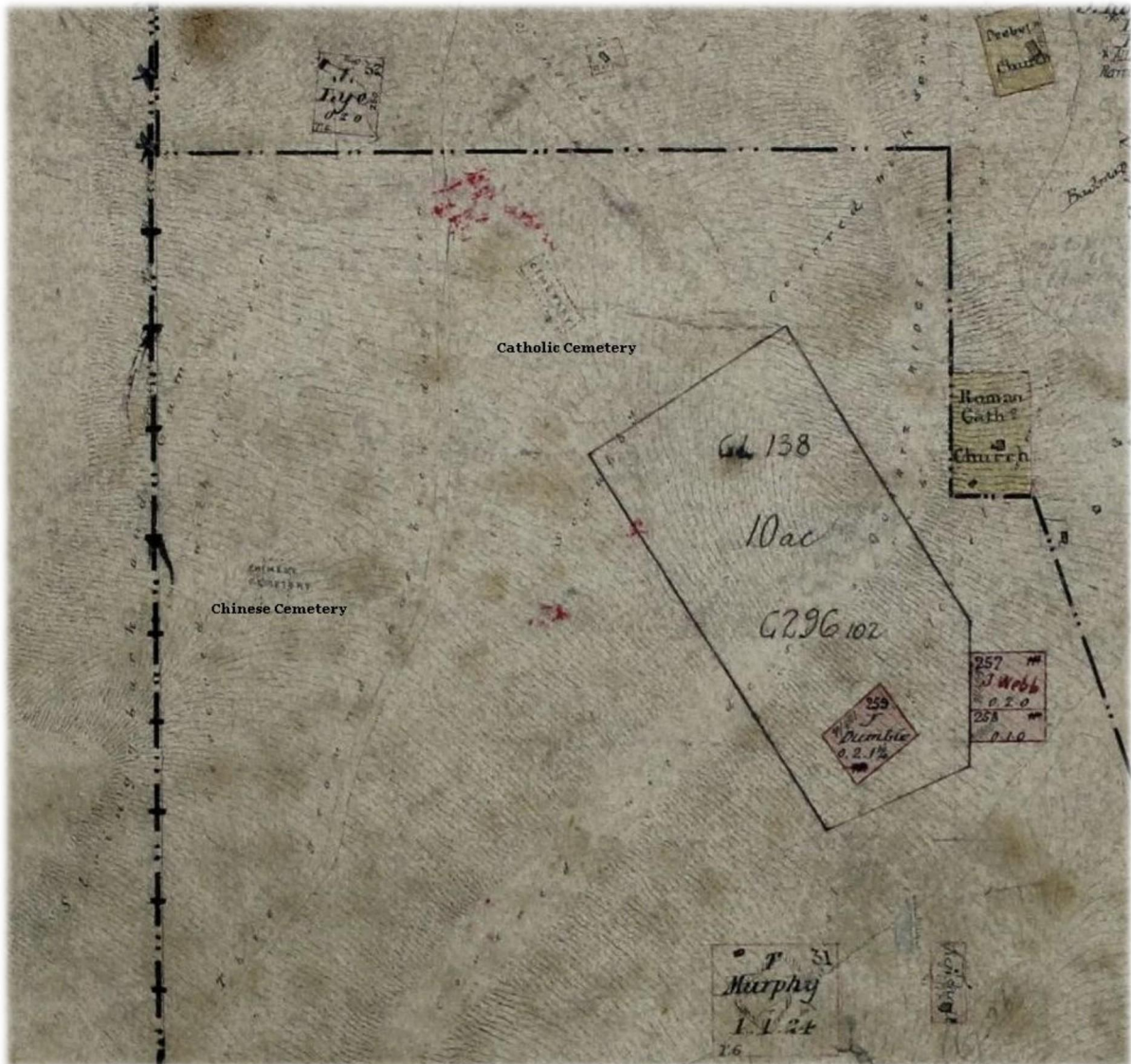
Friday, 26 November 2021

© Warwick P Taylor 2021 – tambaroora.com

Both the Chinese and Catholic Cemeteries are located within what was known as Burying Ground Gully later known as Moonlight Creek or Gully.

The cropped image below of the 1859 Town Charting Plan shows a cemetery located in the position of the current Catholic Cemetery, the surveyor has only indicated that there was a cemetery on that site, no reference being made to the denomination.

Figure 2 - Location of both the Chinese cemetery and the Catholic cemetery circa 1860



*Plan of the Chinese and unknown Cemetery on the 1859 Town Plan
Plan Courtesy of the NSW State Archives and Records*

CEMETERIES OF THE TAMBAROORA

Friday, 26 November 2021

© Warwick P Taylor 2021 – tambaroora.com

The image below shows the position of the Catholic Cemetery, the Chinese Cemetery and the General Cemetery that was surveyed in 1897 and dedicated in 1898.

Figure 3 - Location of both the Chinese cemetery and the Catholic cemetery circa 1860



*Location of the Catholic, Chinese and General Cemetery dedicated in 1898
Image from Google Earth Pro, Trace Lines drawn by Warwick P Taylor 2017*

It appears that this cemetery had escaped any official recognition until 1915 when a notice was placed in the Government Gazette⁴, see [Figure 4](#)

⁴ NSWGG, No.112, Pg.3690, dtd 23 Jun 1915 [7785]

Figure 4 - Land Reserved from Sale and Lease Generally

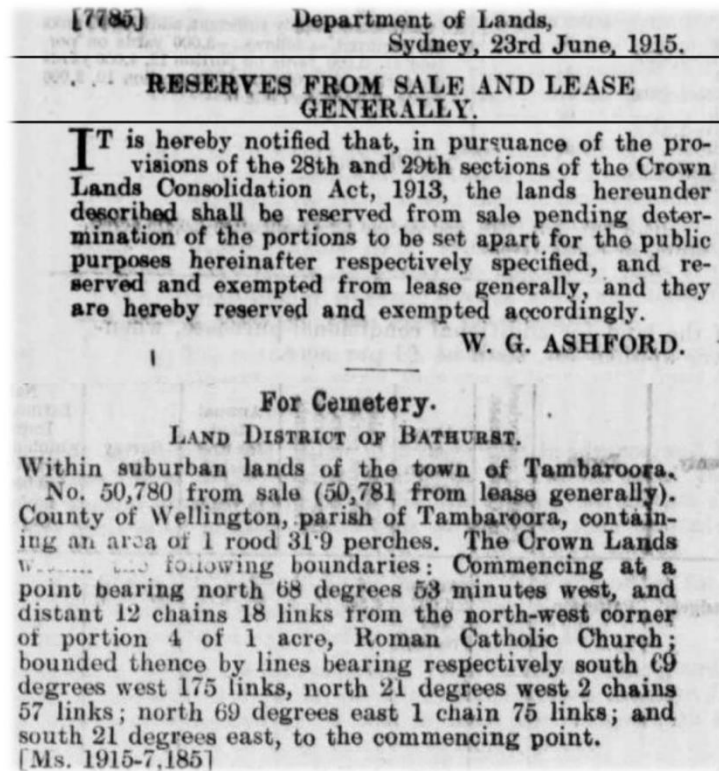


Image Courtesy of TROVE, National Library of Australia

The Cemetery was established well before the above date as indicated by the internments already in existence.

November 1915 saw the first official Trustees appointed for the Cemetery⁵, see [Figure 5](#).

⁵ NSWGG, No.198, Pg.6399, dtd 3 Nov 1915 [2693]

CEMETERIES OF THE TAMBAROORA

Friday, 26 November 2021

© Warwick P Taylor 2021 – tambaroora.com

Figure 5 - Trustees Appointed for Cemetery

[2693] Department of Lands,
Sydney, 3rd November, 1915.

IT is hereby notified, for public information, that, in accordance with the provisions of the Public Trusts Act, 1897, His Excellency the Governor, with the advice of the Executive Council, has been pleased to approve of the appointment of the undermentioned gentlemen and Body as Trustees respectively of the portions of land hereinafter particularised, namely:—

Reserve No. 50,892, at Lower South Arm, Bellingen River, county of Raleigh, parish of South Bellingen, area 1 rood, notified 18th August, 1915, for Public Hall:—

Reserve No. 50,780 at Tambaroora, county of Wellington, parish of Tambaroora, area 1 rood 31·9 perches, notified 23rd June, 1915, for Cemetery:—

The Right Reverend John Dunne, D.D., the Reverend Reginald Corbett, and Thomas Toohey, Esquire.

[Ms. 1915--12,447]

Image Courtesy of TROVE, National Library of Australia

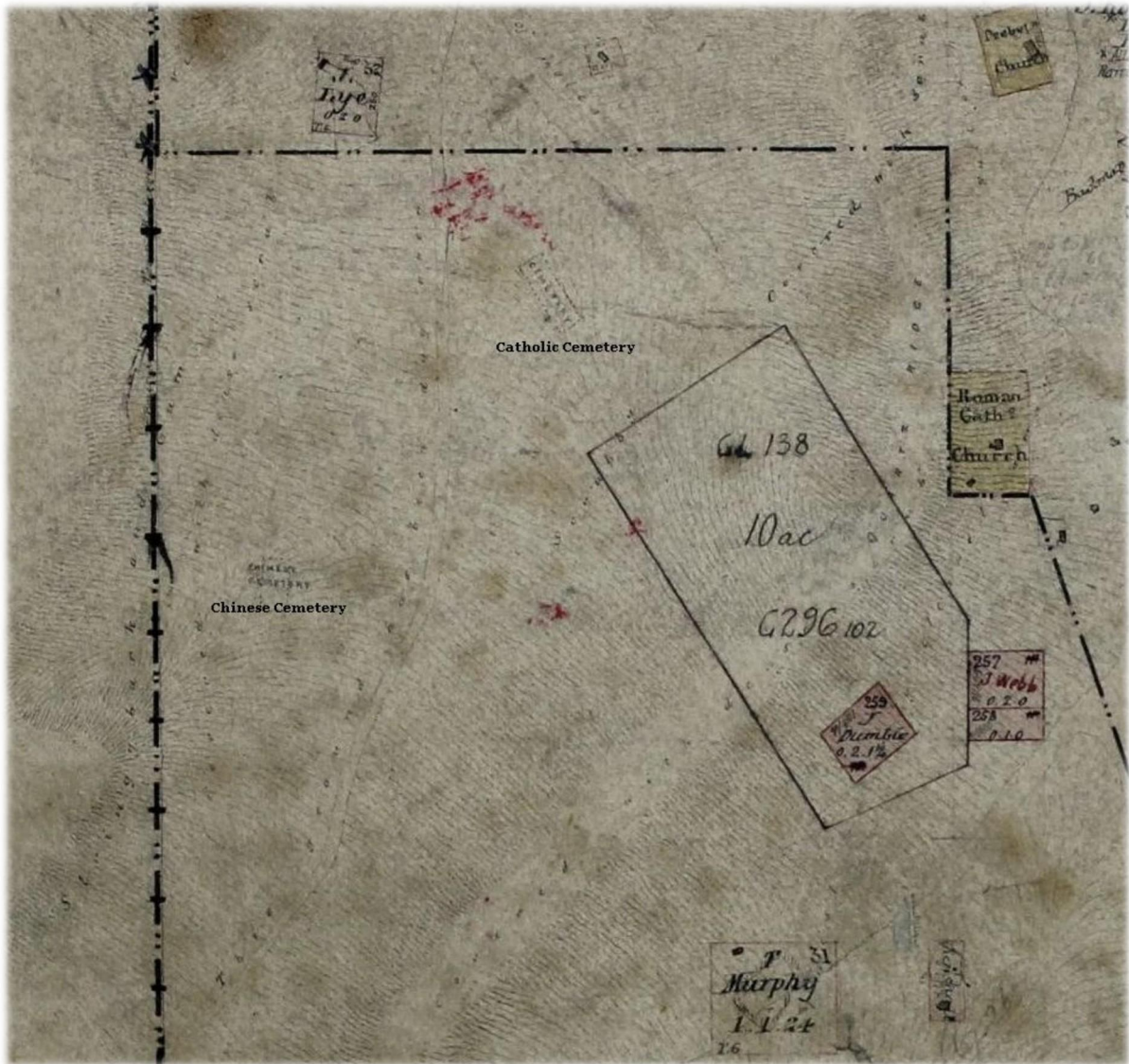
CHINESE CEMETERY

Notes

Located on the Towns western boundary its location is identified on the 1859 Town Charting Plan, see [Figure 6](#), this map and the 1860 map are the only maps that verify its existence. It just like the Catholic cemetery have never been officially surveyed. Even though they were functioning cemeteries at the time of the survey undertaken by Surveyor Price they seem to have been overlooked even though they were both identified by the surveyor on his plans.

The Cemetery is listed on the Commonwealth Register of the National Estate⁶.

Figure 6 - Cemetery Locations



Location of both the Chinese and Catholic Cemeteries from the 1859 Town Charting Plan
Plan Courtesy of the NSW State Archives and Records

The image below shows the position of the Catholic Cemetery, the Chinese Cemetery and the General

⁶ Australian Heritage Database, Department of the Environment, Australian Government

CEMETERIES OF THE TAMBAROORA

Friday, 26 November 2021

© Warwick P Taylor 2021 – tambaroora.com

Cemetery that was surveyed in 1897 and dedicated in 1898.

Both the Chinese and Catholic Cemeteries are located within Burying Ground Gully later known as Moonlight Creek or Gully.

Figure 7 - 1898 General, Chinese and Catholic Cemetery Locations



*Location of the Catholic, Chinese and General Cemetery dedicated in 1898
Image from Google Earth Pro, Trace Lines drawn by Warwick P Taylor 2017*

Figure 8 - Aerial Image of the Chinese Cemetery



*Chinese Cemetery - 2017
Image by Kelvin Taylor 2017*

Records Pertaining to the Chinese Cemetery held by Government Organisations

The Department of the Environment and Energy's Australian Heritage Database - 1991

Tambaroora Chinese Cemetery, Hill End NSW, Australia

Photographs None

List Register of the National Estate (non-statutory archive)

Legal Status Registered (14/05/1991)

Place ID 467

Place File No. 1/03/202/0015

Statement of Significance

Scattered evidence of the initial burial place of many Chinese who died at the Chinese camp of the 1850s to 1880s near Hill End, which is important for its historic associations with the Chinese who played a major role in the gold rush to that area. (Criteria H.1 and A.4)

It is important for its rarity in demonstrating the Chinese burial practice of initial burial in urns and later transporting the urns to China for reburial. (Criterion B.2)

It has potential for archaeological investigation. (Criterion C.2)

Official Values Not Available

Description

Cleared creek flat. The site consists of a scattering of depressions and mounds. The area is surrounded by remains of a leather strap which was once supported on wooden posts delineating the cemetery boundary.

History Not Available

Condition and Integrity

The site has been little disturbed since exhumation of bodies around the turn of the century, due to foot access only and the fact that its location is not widely known or publicised. According to cultural tradition many bodies were exhumed by agents of families or country societies and transported to China for reburial. Excavation in the area in 1978 revealed an urn with bones intact. The urn was replaced. It is assumed that other urns remain.

Location

About 3.5 km north of Hill End and 250 m west of Tambaroora Catholic cemetery, at approximate AMG point:8731 - I and IV - 25754585

Bibliography

National Parks and Wildlife Service

The National Parks and Wildlife Service - 2013

The following information has been extracted from -

The National Parks and Wildlife Service (NPWS) notes in its 2013 Master Plan:

National Government: The Commonwealth Register of the National Estate has listings for a Hill End Historic Conservation Area, Great Western Store and former Post Office, Royal Hotel, St Pauls Presbyterian Church, Golden Gully, and the Tambaroora Chinese Cemetery, which is outside the Historic Site of the NPWS. (Pg.1).

Table 2: Chronology of Events
1858 Chinese Cemetery (Pg.23)

3.5 Cemeteries

There is a Tambaroora Catholic cemetery to the south of Tambaroora, on the west of Mudgee Road and a general cemetery (Anglican) on the eastern side of the road.

There is also a Chinese cemetery further to the west of the Catholic cemetery that is less defined, as the bodies were exhumed at the end of the 19th century. The site demonstrates the burial practices of the Chinese, with an initial burial in an urn and then later repatriation of the bodies back to China.(43) The Chinese cemetery is listed on the Register of the National Estate and there is evidence of archaeological potential. (Pg.33) (43) - Australian Heritage Database

Table 7: Levels of Significance of Study Area Elements

Cemeteries: Catholic, Anglican and Chinese at Tambaroora, Significance: Exceptional (Pg.49)

General Notes

Location

The cemetery is sited on the western side of a creek or gully known as either Moonlight Creek or Moonlight Gully, there is a difference of opinion between some of the residents as to the correct name of the feature. Moonlight Gully is recorded on some geographical maps as being located to the west of the cemetery approximately 900 metres. The gully was formerly known as Burying Ground Gully as the Roman Catholic Cemetery is also located in this area.

Access to the Cemetery

The details from the National Heritage Database states that there was only foot access to the cemetery, the vehicular track to the cemetery now would have been made at the time of the investigation of the cemetery in 1978.

Cemetery Fence

Mr. Robert Fraser, a prominent local resident of Tambaroora and living in proximity to the cemetery recalls from his youth a picket or pale fence surrounding the cemetery. Remnants of metal strapping has been found around the perimeter of the cemetery, it was common practice that metal strapping was used to secure the pickets or pales to the slip rails that were placed between the posts. The remnants of the strapping are all that is left after it had been discarded when the fence was replaced with a barbed wire one. The chisel pointed Rose nails still found on the strapping was found to be in common use around the 1870s and 1880s and appear to have disappeared around the depression of 1893⁷.

⁷ *Papers on Australian Historical Archaeology, Pg.108*

CHURCH OF ENGLAND GRAVEYARD / CEMETERY – The Current Cemetery

*Later known as the
TAMBAROORA GENERAL CEMETERY*

Notes

This cemetery has been mistakenly referred to as the Hill End Cemetery in recent years, at no time has it ever been officially noted as such. The cemetery is located within the town boundary of Tambaroora. A lack of local history knowledge has seen its name mis-quoted.

The following is based on information taken from Government Gazettes, Maps, Crown Survey Plans, letter's and newspapers of the day.

Figure 9 - Church of England Church and Graveyard



*First Bark C of E Church with graves within the fence line
Click on the Images above to Enlarge
Holtermann Collection Images Courtesy of State Library of NSW*

To understand the location of the Church of England (C of E) graveyard and eventual current general cemetery we must first look at the establishment of the C of E church.

Erection of Church - 1852

October 1852 saw the appointment and arrival of the Reverend E.B. Proctor to Tambaroura, on the evening of the 19th October after evening service a meeting⁸, (see Figure 10), was held to formulate a plan for the erection of a church to be also used as a school during the week. At this meeting a committee was formed with the intent of procuring subscriptions towards the erection of the church building.

Figure 10 - Meeting of Community Members to plan for the erection of a Church

TAMBAROURA.

OCTOBER 18.—We are happy to say that this long neglected district has been visited by a clergyman, the Rev. E. B. Proctor, whose ministrations we were blessed with yesterday (19th Sunday after Trinity.) This gentleman is stationed at the Meroo, and but lately has been appointed to Tambaroura, in consequence of which two services were performed in a spare room at the Commissioner's quarters, temporarily fitted up for the occasion. The shortness of the notice, and the absence of a bell to denote the hour of assembling, probably caused a deficiency in the number of persons attending, but notwithstanding, twenty persons in the morning and thirty-six in the afternoon, joined in the services of our church most attentively. There was also a child baptized during the morning service, a woman returned thanks after childbirth, and the presence of the clergyman was availed of by a sick person, who we trust was benefitted by his opportune visit. After the evening service a meeting was held, to devise means for erecting a church, to be used during the week for a school, which proposal gave great satisfaction to the inhabitants; Mr. Assistant-Commissioner MILLER in the Chair, when the following resolutions were passed unanimously.

1st Resolution: Proposed by Mr. M'DONELL, seconded by Mr. SHERIDAN—

That this meeting do express its gratitude to the Lord Bishop of Sydney, and to the Society for the Propagation of the Gospel in Foreign Parts, for their sympathy in the necessities of this district, evinced by sending a clergyman to administer to the spiritual wants of the inhabitants of Tambaroura.

2nd Resolution. Proposed by Mr. S. B. MARSHALL, seconded by Mr. Sub-Commissioner BUCHANAN—

That in order the more fully to reap the benefit of the services of the clergyman so sent amongst them, this meeting feels it their duty to erect a building suitable for Divine Worship, to be used as often as the clergyman can officiate here, and for a school in his absence.

3rd Resolution.—Proposed by Mr. SHERIDAN, and seconded by Mr. DOWSE—

That in order to carry out the above resolution, a Committee be appointed, for the purpose of procuring subscriptions, to consist of Mr. Assistant-Commissioner Miller, chairman; Mr. Sub-Commissioner Buchanan, Mr. Sheridan, Mr. Marshall, Mr. Dowe, Mr. M'Donell, Mr. Phillips, with power to add to their number.

The usual vote of thanks to the Chairman was duly passed, and before the meeting separated upwards of £15 was subscribed in the room. It is intended to have service performed here once a month, and although, considering the extent of the district, we can hardly expect more at present, yet we quite sympathise with the clergyman in the hope that other arrangements may be hereafter entered into to afford us more frequent opportunities of celebrating Divine service,

Image Courtesy of TROVE, National Library of Australia

⁸ Newspaper, Sydney Morning Herald, Pg.3, dtd 23 Oct 1852

In October 1852 a deputation of C of E residents from Tambaroora requested to have land allocated for a church and school to be sited behind the Barracks (Commissioners Camp), also requested was the piece of land used as the burial ground which at that time had 10 interments. To date this burial ground location has not conclusively been ascertained.

1854 saw a list of appropriations of land for religious purposes authorised, included was land allocated to the C of E for a church of 1 acre, a school of 2 roods and a parsonage of 2 roods.

The church was officially opened⁹, (see Figure 11), in July 1854 on the current site of the general cemetery. The realization that the Tambaroora Goldfield was bigger than first thought may have seen those keen to see the establishment of the church and school question the suitability of the site behind the Barracks and revised the location requested and moved to a more stable area south of the main town area. Factors contributing to the move may have included:

- the land behind the barracks otherwise known as the commissioner's camp was also the area that one of the first applications for the registration of a quartz vein was made.
- The area was also known as Samuels field or flat which could indicate that it was used to depasture stock prior to the local discovery of gold on the site.
- It was also a site re-visited on numerous occasions by miners with new discoveries being made.

Figure 11 - Church Officially Opened

TAMBAROORA.
On Sunday last the church here was opened by the Rev. Mr. Palmer to whom great credit is due. Since we were placed under her spiritual charge some four months since. Within that time nearly if not upwards of £200 has been subscribed for the building of the church, school room and residence of the schoolmaster which are now complete and paid for. A sum also of upwards of £150, has been guaranteed towards the annual stipend of a resident clergyman, and if the Government will give the same amount no doubt, but we shall shortly enjoy the regular performance of the services of the church here. I may add that the Rev. Mr. Palmer has been most cordially and effectually supported in his endeavours here by our commissioner Mr. Broughton, and our churchwardens Dr. Cutting and Mr. Stack. I have forwarded you these particulars in the hope that they will help to refute the too common opinion that the diggers are a set of ruffians, caring for nothing but grog and dissipation.

Image Courtesy of TROVE, National Library of Australia

The Crown Plan of the Colonial Gold Company's and W.C. Cole's Quartz Claims and Crushing Works near Tambaroora dated 1855 shows the location of the church at the southern end of the town on one of the tracks to Sofala¹⁰. A more detailed Crown Plan of the 3 portions that were allocated shows the layout of the church, school and parsonage. Even though the appropriated land was surveyed, the position of the church, school and fence did not match the Crown Plans¹¹.

In 1859 Mr. Price, a Licenced Surveyor was issued instructions to undertake a survey of the layout of

⁹ Newspaper, Bathurst Free Press and Mining Journal, Pg.2, dtd 8 Jul 1854

¹⁰ Crown Survey Plan, Church of England Appropriated Lands, 6-1418, 1855, NSW Land Registry Services

¹¹ Crown Survey Plan, Church of England Appropriated Lands, 551-730, 1855, NSW Land Registry Services

CEMETERIES OF THE TAMBAROORA

Friday, 26 November 2021

© Warwick P Taylor 2021 – tambaroora.com

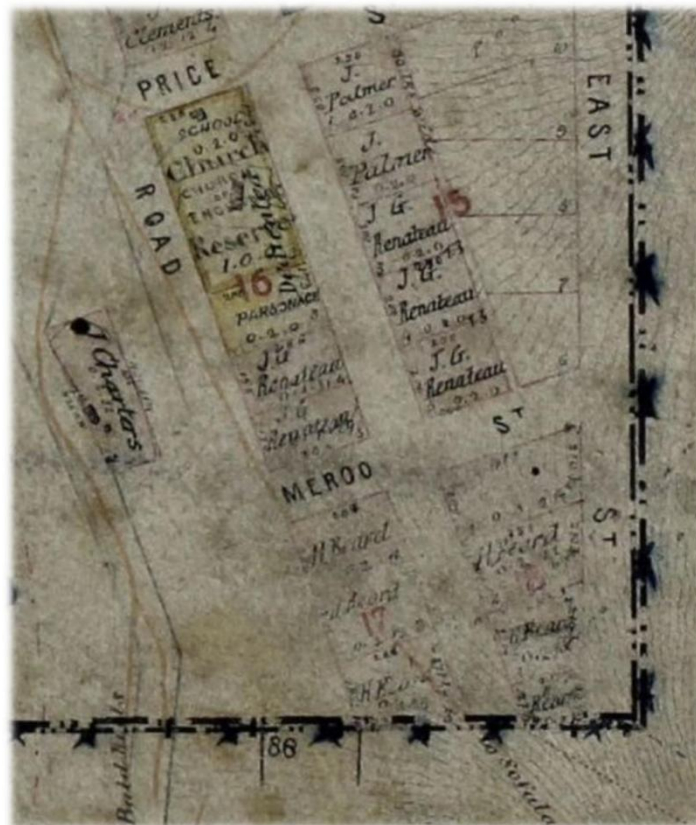
the town in preparation of it officially becoming a Town named Tambaroora. One of the Surveyors undertakings was to try and bring some sort of uniformity to the layout of the town from what was at the time a haphazard collection of buildings and roads. These would have included the C of E church and school buildings which had been in existence since 1854. Once his task had been completed notification appeared in the NSW Government Gazette of 1863, for Lots 1, 2 and 3 of Section 16 for the use of the C of E.

The Graveyard / Cemetery - 1854

The cemetery had its beginnings as the C of E church graveyard created around the same time as the opening of the C of E church in 1854. No area was officially allocated for a C of E cemetery but most likely it followed the long-held tradition of including a church graveyard within the confines of the church perimeter, not long after the church opened interments started to appear.

The image below (see [Figure 12](#)) shows Section 16 on the 1859 Town Map and the land occupied by the Church of England, Lot One was allocated to the School, Lot 2 for the Church and Lot 3 for the Parsonage. The school can be seen annotated in Lot 1, the Church on Lot 2 can be seen surrounded by a fence, this was the original position of the Church. This has been confirmed by images of graves located within the vicinity of the Church. The aerial images below show the alignment of the graves prior to 1871-74 when the cemetery was unofficially changed to a General Cemetery and re-aligned to reflect the surveyed boundaries made by Surveyor Price in 1859.

Figure 12 - Position of the Church and Yard in relation to Section 16 as shown on the 1859 Town Plan



Position of the Bark Church and Fence Line within Lot 2 Section 16 showing the layout of the School on Lot 1 of 2 roods, the Church on Lot 2 of 1 acre and the Parsonage on Lot 3 of 2 roods.
Plan Courtesy of the State Records of NSW

Eventually the graveyard occupied the area within the fence surrounding the church. The fence line shown below in the Plan (see Figure 13), is not indicative of the current fence line. The fence line may not have changed to conform with the surveyed parcel of land until after the C of E relocated their church in 1871 and the graveyard enlarged to accommodate the non-denominational interments.

Figure 13 - Layout of the Church Yard in relation to Section 16



The Sketch above shows the original position of the Church and fence line in relation to Lot 2 Section 16 which was the surveyed site noted in the 1863 Government Gazette.

Drone Imagery by Kel Taylor and Overlay by Warwick P Taylor

The image above represents where the original church and graveyard were located in relation to the current cemetery. The largest red box is the outline of Lot 2 Section 16, Lot One was located to the north of Lot Two, Lot Three to the south of Lot Two was gazetted as the Parsonage. The red dashed line box and mimic'd by the solid red line box is the outline of the original fence line. The smaller red box within the fence line is the position of the bark C of E church, this remained the size of the cemetery up until at least 1872-73 when the Holtermann collection images at the top of the page were taken.

Figure 14 - Drone Image showing site of the Church



An aerial image of the general cemetery with an insert of the position of the original church graveyard in relation to the current cemetery. The alignment of the graves in the church graveyard differs from those of the later period when the graveyard became an all denominational cemetery circa 1874. The alignment of some graves within the earlier C of E graveyard are post 1872-73. This can be seen where the bark church was located, all graves within that area are post-dated 1874.

1871 saw the church building re-locate to its new site at Lot 4 and 5 Section 2, the graveyard remained at its present location and eventually took on the roll as the area's unofficial general cemetery circa 1874. Trustee's were appointed, Joseph James WALPOLE, Thomas Sheridan COOPER, Thomas PATEN, John McCULLUM and George DEWDNEY for the C of E portion of the general cemetery, interestingly this coincided with the formation and tabling of the by-laws in parliament of the Hill End Municipal Council who may have assumed responsibility for the cemetery.

The decision to make it the general cemetery must have been a local one as the Bathurst Diocese were not aware of the change nor was there entries in the Government Gazettes to reflect the change from C of E dedicated land to that of a general cemetery. These changes did not take effect until 1951 when the cemetery was officially recognised.

James CHARTERS was noted in 1876 as being the Sexton for the church and at the time was living at Lot 1 Section 21 which he had purchased in 1865, the Lot was located on the other side of Steele Street across from the cemetery^{12,13}.

Even though the land had been occupied by the C of E since 1854 it was not granted to the "United Church of England and Ireland" and its Trustee's until 1884^{14,15,16}, the land usage was still noted as being for a school, church and parsonage, the same as for the 1863 NSW Government Gazette, but by then the church had already moved to its new location so in effect the grants were already

¹² Grevilles Post Office Directory, 1872, Tambaroora

¹³ Grevilles Post Office Directory, 1875-76, Tambaroora

¹⁴ Grant, United Church of England and Ireland, No.5, Lot 1 Section 16 Volume 697, Folio 206, 21 Jan 1884, NSW Land Registry Services

¹⁵ Grant, United Church of England and Ireland, No.1, Lot 2 Section 16 Volume 697, Folio 207, 21 Jan 1884, NSW Land Registry Services

¹⁶ Grant, United Church of England and Ireland, No.3, Lot 3 Section 16 Volume 697, Folio 208, 21 Jan 1884, NSW Land Registry Services

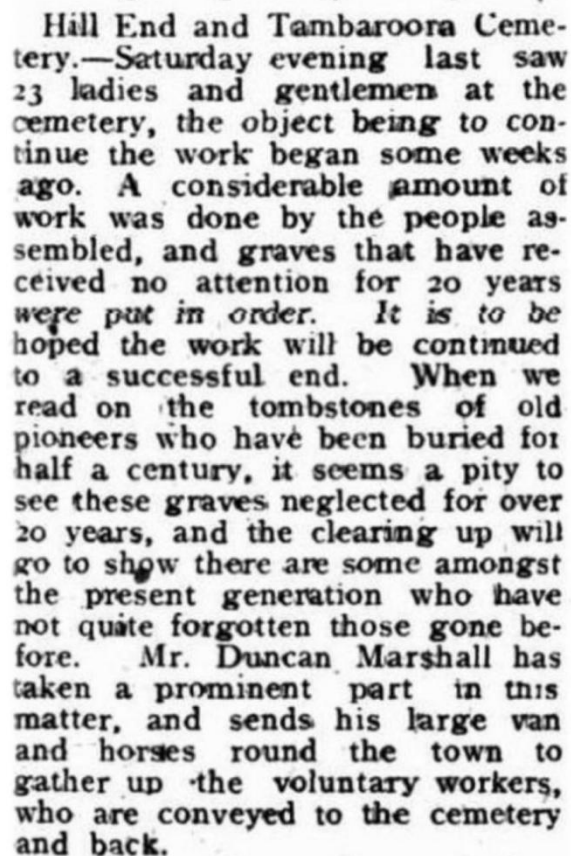
obsolete when issued.

The first Trustee's documented and appointed for these Grants were: Joseph James WALPOLE, Thomas PATEN, Samuel BADMAN, Herbert James PATEN, and John LAWLER^{14,15,16}.

Cleaning of the Cemetery – A Community Effort - 1917

After years of neglect the cemetery received some well-deserved tender loving care, community members rallied to the task and in 1917 efforts were made to return the cemetery to its former state (see Figure 15)

Figure 15 - Cleaning of the Cemetery



Hill End and Tambaroora Cemetery.—Saturday evening last saw 23 ladies and gentlemen at the cemetery, the object being to continue the work began some weeks ago. A considerable amount of work was done by the people assembled, and graves that have received no attention for 20 years were put in order. It is to be hoped the work will be continued to a successful end. When we read on the tombstones of old pioneers who have been buried for half a century, it seems a pity to see these graves neglected for over 20 years, and the clearing up will go to show there are some amongst the present generation who have not quite forgotten those gone before. Mr. Duncan Marshall has taken a prominent part in this matter, and sends his large van and horses round the town to gather up the voluntary workers, who are conveyed to the cemetery and back.

Image Courtesy of National Library of Australia - TROVE

Discovery that the Cemetery was not a Dedicated Cemetery – 1929

In 1929 a corporate trust from Bathurst undertook to rejuvenate the cemetery, it was not until after this activity that it was realised that the Trust had inadvertently cleaned the wrong cemetery, they had cleaned the Tambaroora general cemetery in the western part of Tambaroora which had been surveyed and dedicated in 1898. When this error had been realised representations were made to religious and political authorities over the cemetery's management and non-denominational burials. One of which saw a delegation from Tambaroora and Hill End approach the Bishop of Bathurst regarding the ongoing management of the Cemetery¹⁷ (see Figure 16), it was at this meeting that it was found that the cemetery was not in fact a dedicated cemetery of any denomination, having never being gazetted for that purpose.

¹⁷ Newspaper, Mudgee Guardian and North-Western Representative, Pg.20, dtd 6 Jun 1929

Figure 16 - Ongoing Management of the Cemetery

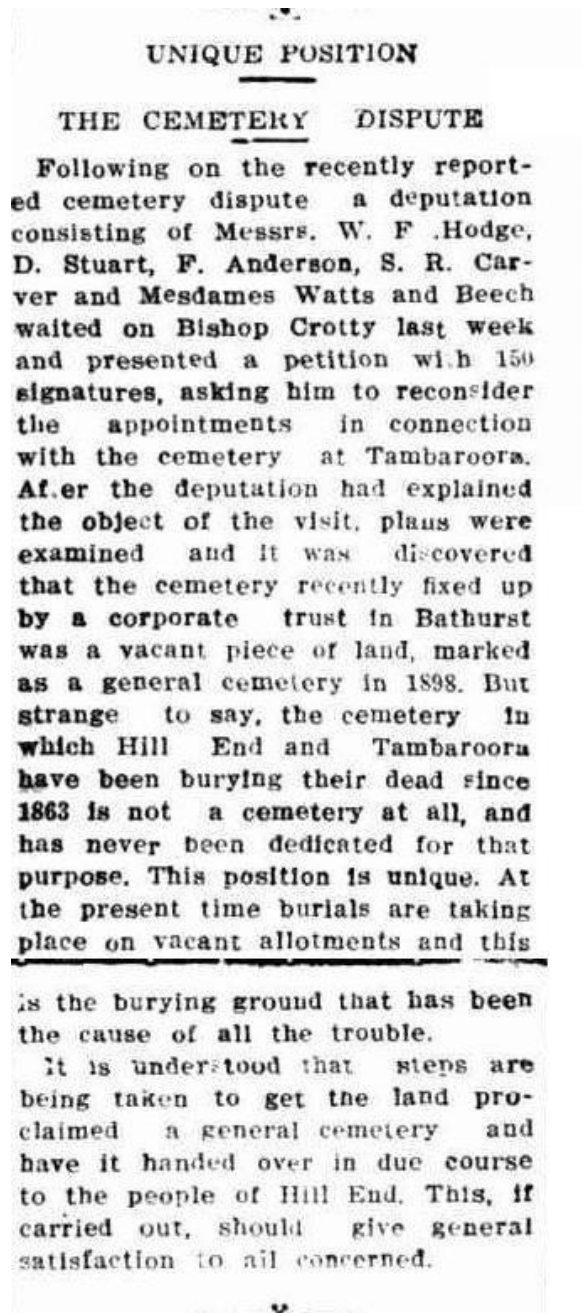


Image Courtesy of TROVE, National Library of Australia

The Bishop of Bathurst stated that other denominations would continue to be interred in the cemetery but it was to be understood that the church still had control of the land¹⁸, (see Figure 17).

Figure 17 - Temporary Control of the C of E Cemetery

¹⁸ Newspaper, Mudgee Guardian and North-Western Representative, Pg.10, dtd 26 Feb 1930

VEXED QUESTION

TAMBAROORA CEMETERY

QUESTION OF CONTROL

Efforts which have been made to clear up matters in connection with the control of the Tambaroora cemetery will, it is hoped, result in a satisfactory settlement being arrived at.

Canon Holmes of Bathurst in a letter to the rector of Hill End (Rev. R. W. Ellis) states that the utmost will be done to settle the matter, provided that the people interested are willing to recognise the existing authority of the Church of England Property Trust over the cemetery for the time being. If the people of Hill End are willing to apply to either to the trust or the rector for permits to bury, notices will not be necessary at cemetery. The church authorities see no reason why such applications should be refused.

When the authority asked for has been acknowledged it is the intention to surrender the present trust

and ask the Lands Office to create a general trust for the cemetery and also to dedicate a separate area for the Church of England

There is no desire on the part of the Church of England to retain trusteeship of a cemetery which has been a general burying place for all denominations, and concerning which there appears to be

The Canon concludes that it will be a matter of six months before the Lands Office will be able to send a surveyor to Hill End. In the meantime the trust will continue to assert its authority in the matter of the cemetery.

Image Courtesy of TROVE, National Library of Australia

Moves to Gain Control of the Management of the Cemetery - 1944

In 1944 at the instigation of Mr. Harry Walpole of Hill End an exchange of correspondence between Members of State Parliament sought to put to an end to the ongoing issue of control of the Cemetery

CEMETERIES OF THE TAMBAROORA

Friday, 26 November 2021

© Warwick P Taylor 2021 – tambaroora.com

being used by the residents of both Tambaroora and Hill End. A letter from the Minister of Lands Mr. J.M. Tully to the Minister of Conservation the Hon. W.F. Dunn M.L.A., reads:

“24 January 1945

Dear M. Dunn,

With reference to your personal representations on behalf of Mr. Harry Walpole of Hill End regarding the Cemetery at Hill End and Tambaroora which it is desired to have resumed and proclaimed as a General Cemetery to be placed under the control of chosen trustees, I shall have inquiries made into the matter and let you have further advice. Yours Faithfully,

(J.M. Tully)

Minister of Lands”¹⁹

Again, on the 14 Feb 1945 the Minister of Lands Mr. Tully wrote to the Minister of Conservation Mr. Dunn:

“14 FEB 1945

Dear Mr. Dunn,

With reference to your personal representations to me on behalf of Mr. Harry Walpole of Hill End, relative to his request that the area used as a general burial ground at Hill End and Tambaroora be formally established as a general cemetery, I desire to inform you that the area referred to is allotment 1, 2 and 3 of section 16, Town of Tambaroora, which were dedicated on the 16th July 1863, for Church of England Church, School and Parsonage. These Allotments have for the past 70 years been used as burial ground for all denominations excepting Roman Catholic.

In view, however, of certain representations made to my Department, the Church of England Authorities have been asked as to whether that would concur in the dedication referred to being revoked and the area being reserved as a General Cemetery and placed under the control of an appropriate trust.

The matter will be further considered on receipt of reply from the Church of England Authorities.

Yours faithfully,

J.M. Tully”¹⁹

It is worth noting in the letter above that the Minister mentions that the cemetery has *"for the past 70 years been used as burial ground for all denominations"*, this corresponds approximately to the period that the Church of England Church moved to its new location on Lot 4 and 5 of Section 2 nearer the centre of town in 1871. The local community in the 1870's may have thought that with the departure of the Church of England Church from the site, its authority over the area was reduced, this may have seen the introduction of all denomination burials without realising it was still dedicated Church of England land. I should mention here that up until at least when the photographs of the C of E bark Church in the Holtermann Collection were taken the perimeter fence of the Church and graveyard was still in its original position as per the town maps drawn by the surveyors in 1859.

A letter to Harry Walpole from the Minister of Conservation Mr. Dunn dated the 5th April 1945 gave an update on progress being made to the recognition of the cemetery:

“5th April 1945

Dear Harry,

On my return to Sydney from my Electorate where I spent in all 12 days, I looked up the case in regard to the Hill End Cemetery.

I found that I had made strong representations to my colleague Mr. J.M. Tully, Minister of Lands, and that I had received a reply from him under date of 14th February setting out the position. This

¹⁹ Hill End and Tambaroora Gathering Group

CEMETERIES OF THE TAMBAROORA

Friday, 26 November 2021

© Warwick P Taylor 2021 – tambaroora.com

letter I sent to you on the 15th February.

It was stated in the letter from the Minister of Lands that in view of certain representations made to his Department, the Church of England authorities have been asked as to whether they would concur in the dedication referred to being revoked and the area being reserved as a general cemetery and placed under the control of an appropriate Trust.

An officer in the Lands Department informed me that the matter is held up until a final reply is received from the Church of England authorities.

As far as I can find out, the Church of England authorities have almost freehold title over the area in question and until such time as they agree to the revocation of the reserve the Lands Department is not able to deal with it.

I shall keep in touch with the Lands Department and immediately I have some further information, I shall write to you again.

With kind regards,

Your sincerely,

Dunn”¹⁹

Mr. T. Allsop was tasked with ascertaining if Lots 4 and 5 adjoining Lot 3 the Parsonage Lot would be suitable for burial purposes. He wrote to Harry Walpole on the 24 May 1945:

“24/5/45

Dear Harry,

In connection with the proposed general cemetery at Tambaroora, I have been asked to report from local knowledge is possible as to the suitability of Lots 4 and 5 Sec.16, for burial purposes. The allotments adjoin the C. of E. Parsonage site, and are shown on sketch below (see Figure). I do not remember whether they are suitable for graves, but thought that you would know and let me have your opinion.

If you consider that the lots are suitable for burial purposes I can report accordingly, but if you say that they are not suitable the matter will have to wait until such time as I can get out that way.

The allotments have been suggested as an alternative to resumption and dedication of the existing burial area as a General Cemetery.

My regards to Mrs Walpole,

Sincerely,

T. Allsop”¹⁹

Figure 18 - Sketch of Section 16 showing Lots 4 and 5

CEMETERIES OF THE TAMBAROORA

Friday, 26 November 2021

© Warwick P Taylor 2021 – tambaroora.com

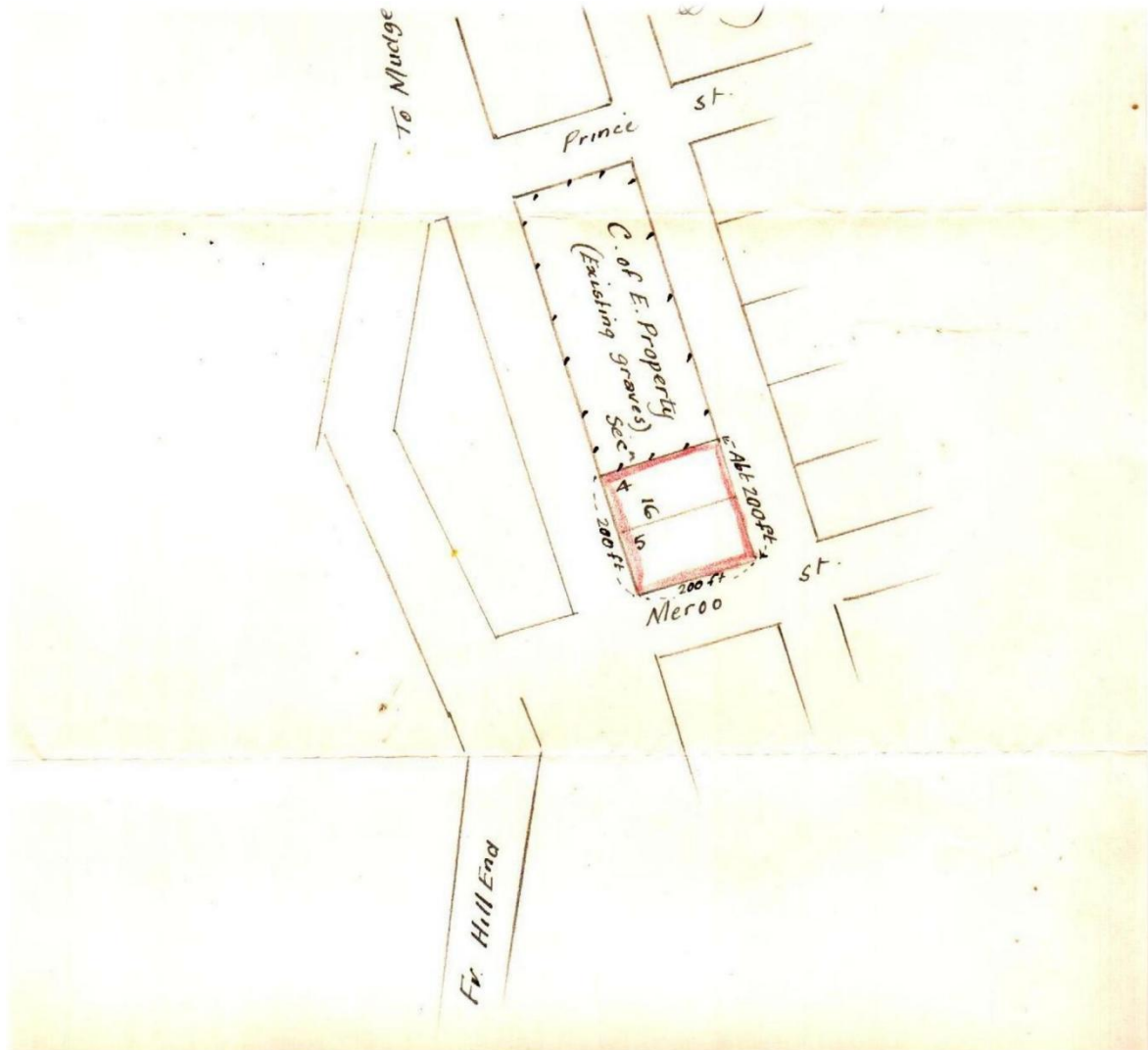


Image Courtesy of the Hill End and Tambaroora Gathering Group

Further correspondence between the Minister of Lands Mr. J.M. Tully and the Minister of Conservation Mr. W. Dunn dated the 14th September 1945 gave a progressive update:

“14th September 1945
The Hon. W.F. Dunn, M.L.A.,
Minister of Conservation,
SYDNEY.

Dear Mr. Dunn,

With reference to your further personal representations on behalf of Mr. Harry Walpole of Hill End, concerning the burial ground in that locality, I have to inform you that this matter is at present with the District Surveyor, who has been asked to expedite his report as far as practicable.

Your faithfully,
Minister of Lands. ”¹⁹

CEMETERIES OF THE TAMBAROORA

Friday, 26 November 2021

© Warwick P Taylor 2021 – tambaroora.com

Twelve months later Harry Walpole received a letter from the Minister of Lands Mr. W. Dunn, with another progressive report:

*“5 SEP 1946
H. Walpole, Esq.,
HILL END. N.S.W.*

Dear Mr. Walpole,

With reference to your recent personal representations to me at Hill End relative to the Hill End and Tambaroora Cemetery, I desire to inform you that upon my return to Sydney I have looked into the matter.

The position at the moment is a little complicated, but negotiations are being carried out with the Church of England Authorities and I hope to have the matter finalised shortly.

The area which is now being used as a cemetery for the Hill End ad Tambaroora locality is actually the property of the Church of England Authorities and, as you know, it has been used for many years as a burial ground for the dead of all denominations except Roman Catholic. Everything was apparently satisfactory until the Church of England Authorities decided that any burials within the area must be conducted in accordance with the service of the Church of England. No plan of burials has been carried out and consequently graves of all denominations are intermingled throughout the area.

The surface parts of the land is shallow and other parts are affected by erosion, but the District Surveyor considered that there is sufficient area, mostly in the north east corner, to meet the requirements for the next 50 years. It was suggested by the District Surveyor that the whole area be resumed by the Crown and after reservation as a General Cemetery, an allotment be made for the exclusive use of the Church of England Authorities and the balance allotted for general use by any other denomination which may require the use of same.

In view of the fact that the area is the property of the Church of England Authorities, this suggestion has been referred to those Authorities for any comment and upon receipt of a reply the matter will be further considered. It has also been suggested that if Ministers of other denominations were permitted to conduct burial services within the area, the present difficulty might be eased.

Your faithfully, M. Dunn”

Approval Given to Revoke Dedicated C of E Lands and Change to General Cemetery - 1950

Harry Walpole’s relentless pursuit to have the cemeteries status changed finally paid dividends when he received a letter from the Lands Department in October 1946:

*“24th October 1946
H. Walpole Esq.,
HILL END N.S.W.
Dear Sir,*

With reference to previous correspondence and more particularly to the Minister's letter to you of the 3rd September, 1946, relative to the Hill End and Tambaroora Cemetery, I desire to inform you that the authorities of the Church of England are prepared to have the Allotments 1, 2 and 3 resumed by the Crown subject to provision being made therein for a suitable site for the exclusive use of the Church of England Denomination, the balance of the area to be set apart for general use by any Denomination which may require to use same.

In the circumstances the Minister has approved of the District Surveyor at Orange being authorised

to survey an area in the north east corner of Allotment 1 which would meet the requirements of the Church of England authorities, with a view to the dedication and grants dedicated for a general cemetery, the area surveyed to be allotted as a Church of England burial ground and the remainder to be left as a general burial ground for all other Denominations.

*Yours faithfully,
H.H. Gust,
Under Secretary¹⁹*

It still took until 1950 that positive steps were made to officially recognise the cemetery. In that year a proposal for the resumption of the dedication of Lots 1, 2 and 3 Section 16 made in 1863 and the re-dedication as a general cemetery was made in the NSW Government Gazette²⁰, (see Figure 19).

Figure 19 - NSWGG Proposal to Resume the Dedicated Lands

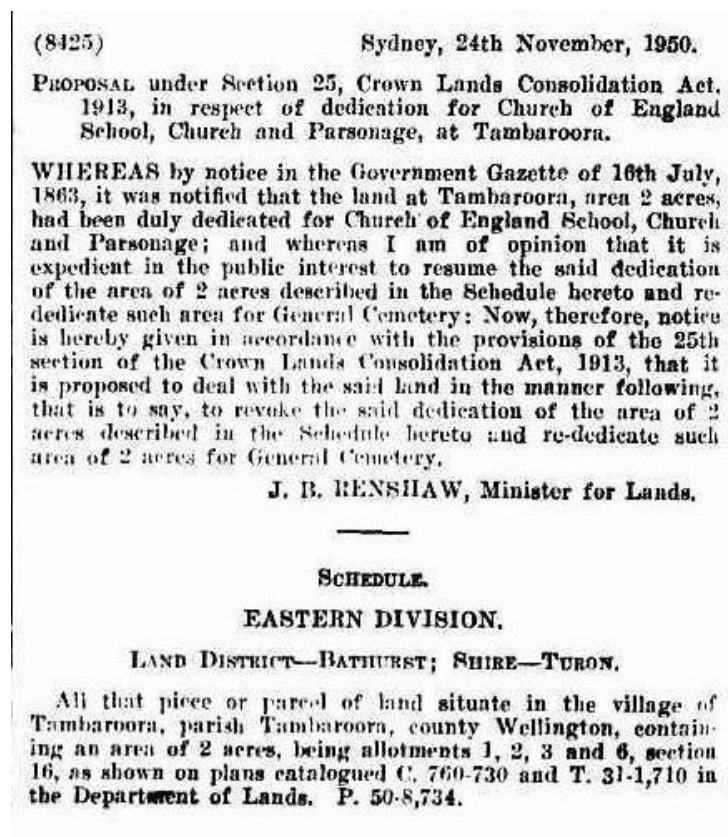


Image Courtesy of TROVE, National Library of Australia

The following year the NSW Government Gazette revoked the 1863 NSW Government Gazette for the lands usage and the land was re-dedicated as a general cemetery.

Trustees were appointed for the C of E portion of the General Cemetery in 1952²¹, (see Figure 20).

Figure 20 - Trustees Appointed for C of E Portion of the General Cemetery

²⁰ New South Wales Government Gazette, No.180, Pg.3504, dtd 24 Nov 1950

²¹ New South Wales Government Gazette, No.36, Pg.511, dtd 15 Feb 1952

NOTICE APPOINTING TRUSTEES UNDER THE PUBLIC TRUSTS ACT, 1897.—PROCLAMATION.

IN accordance with the provisions of the Public Trusts Act, 1897, I, Lieutenant-General Sir JOHN NORTHCOTT, Governor of the State of New South Wales, with the advice of the Executive Council, do by this notice appoint the undermentioned gentlemen and bodies as trustees, respectively, of the portions of land hereinafter particularised.

Signed and sealed at Sydney, this 14th day of February, 1952.

(L.S.) J. NORTHCOTT, Governor.

By His Excellency's Command,

F. H. HAWKINS, Acting Minister for Lands.

GOD SAVE THE QUEEN!

Reserve No. 62,319 at Bermagui, notified 7th November, 1930, for Resting Place, Public Recreation and Access:—*The Council of the Shire of Mumbulla* (in the places of A. L. H. Keating, A. H. Wills, R. J. Ginns and A. W. Mead, resigned, and J. Hurley, removed). P. 51-8,914.

Reserve No. 51-881 at Emerald Hill, notified 1st December, 1916, for Public Hall:—Leslie John Griffith, William James Hertel and John Stuart Buchanan (in the places of G. R. Foreman and J. K. McCrabb, resigned, and A. W. Knapman, retired). P. 51-9,592.

Reserve No. 72,301 at Gravesend, notified 6th June, 1947, for Children's Playground:—Keith Rathmell (in the place of R. I. Coulton, resigned). P. 51-9,686.

Reserve No. 53,407 at North Barellan, notified 1st August, 1919, for Public Recreation:—Reginald George Smith (in the place of G. A. Gilmour, retired). P. 51-9,500.

Reserve No. 64,746 at Red Rock, notified 14th September, 1934, for Public Recreation and Resting Place:—Nathan Thomas William Corfe (in the place of G. E. Wilson, resigned). P. 51-9,722.

Reserve No. 37,204 at Sandy Creek, notified 20th February, 1904, for Public Recreation:—Albert William James Darling-ton (in the place of T. McGhee, resigned). P. 51-9,868.

The portion of the General Cemetery at Tambaroora, dedicated 22nd June, 1951, set apart for Church of England Burial Ground:—The Church of England Property Trust, Diocese of Bathurst. P. 51-9,534.

Site for Tresillian Mothercraft Training Home at Waratah, area 2 acres 1 rood 15 perches (ex. pipe-line), dedicated 30th November, 1951:—The Royal Society for the Welfare of Mothers and Babies. P. 51-8,240.

Reserve No. 69,787 at Warrah, notified 10th January, 1941, for the Preservation of Native Flora and Fauna:—Louis Charles Birch (in the place of M. F. Crommelin, retired). P. 51-9,124.

Reserve No. 74,633 at Woodstock, notified 7th December, 1951, for Rest Park and Children's Playground:—*The Council of the Shire of Waugoola*. P. 51-8,545. (6519)

Image Courtesy of TROVE, National Library of Australia

This final dedication saw an end to a long battle to have not only the cemetery recognised officially but also noted that it was in fact originally the site of the Church of England Church, School and Parsonage, and never gazetted or dedicated as a formal cemetery. Its existence as a cemetery was more akin to being the Church of England graveyard only.

CEMETERIES OF THE TAMBAROORA

Friday, 26 November 2021

© Warwick P Taylor 2021 – *tambaroora.com*

TAMBAROORA GENERAL CEMETERY - 1859

PLEASE NOTE

This Cemetery site is now on private property and as such there is no access to the site.
Please respect the owner's privacy.

General Cemetery - Proposed Site - 1859

A proposed site was surveyed by Surveyor J.A.H. Price in mid-1859, its location may have been influenced by the presence of an existing grave located south east of the town which was situated between the two tracks leading to the town from Sofala. The actual Cemetery layout although drawn was not surveyed, only a survey to the site and the grave was undertaken as can be seen below. This Crown Plan²² was cancelled and replaced by another Crown Plan²³ in 1861, (see Figure 21).

Figure 21 - Layout of Proposed General Cemetery's

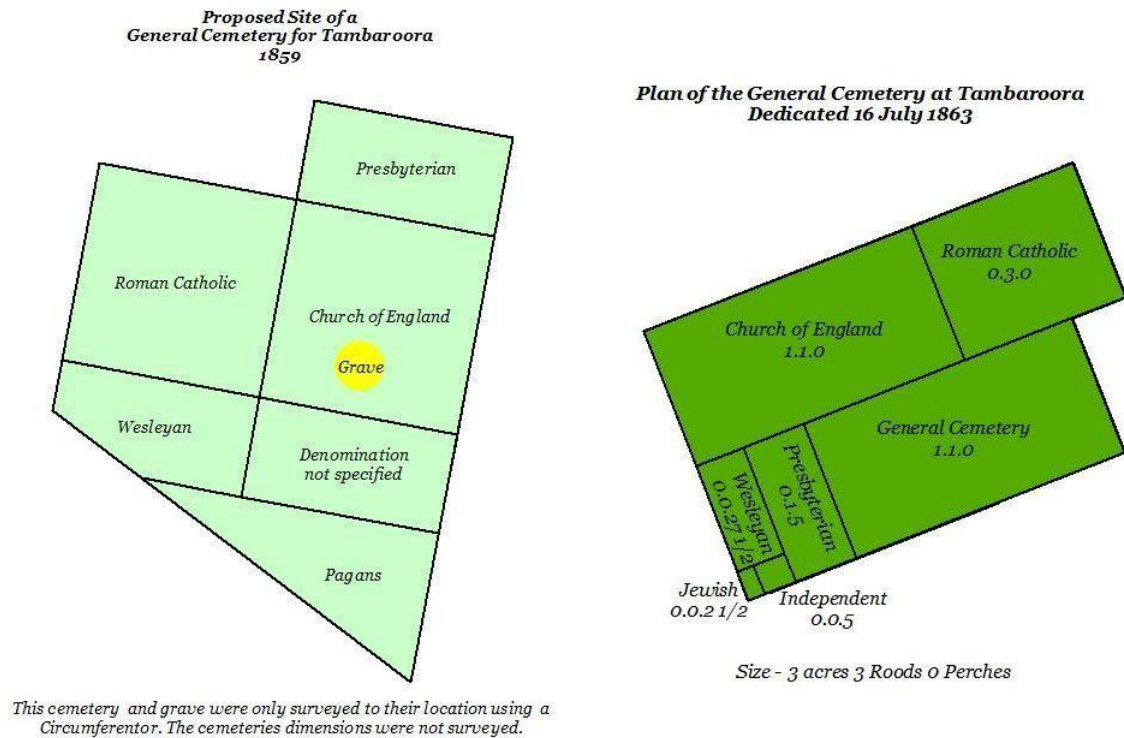


Image compiled from Crown Plan 741-730, 1859 and 800-730, 1861
Reconstructed using an Autocad program by Warwick P Taylor - 2017

The image below shows both the surveyed cemeteries, the earlier cemetery surveyed in 1859 is highlighted by the light green colour and partially obscured by the dark green cemetery surveyed in 1861, both show their respective survey trace lines back to the town boundary. The earlier cemetery trace lines follow the escort track back to the junction of the track and the eastern town boundary, the later cemeteries trace lines appear to follow the contour of the land back to the south western

²² Crown Plan, Proposed General Cemetery, 741-800, 1859, NSW Land Registry Services

²³ Crown Plan, Tambaroora General Cemetery, 800-730, 1861, NSW Land Registry Services

CEMETERIES OF THE TAMBAROORA

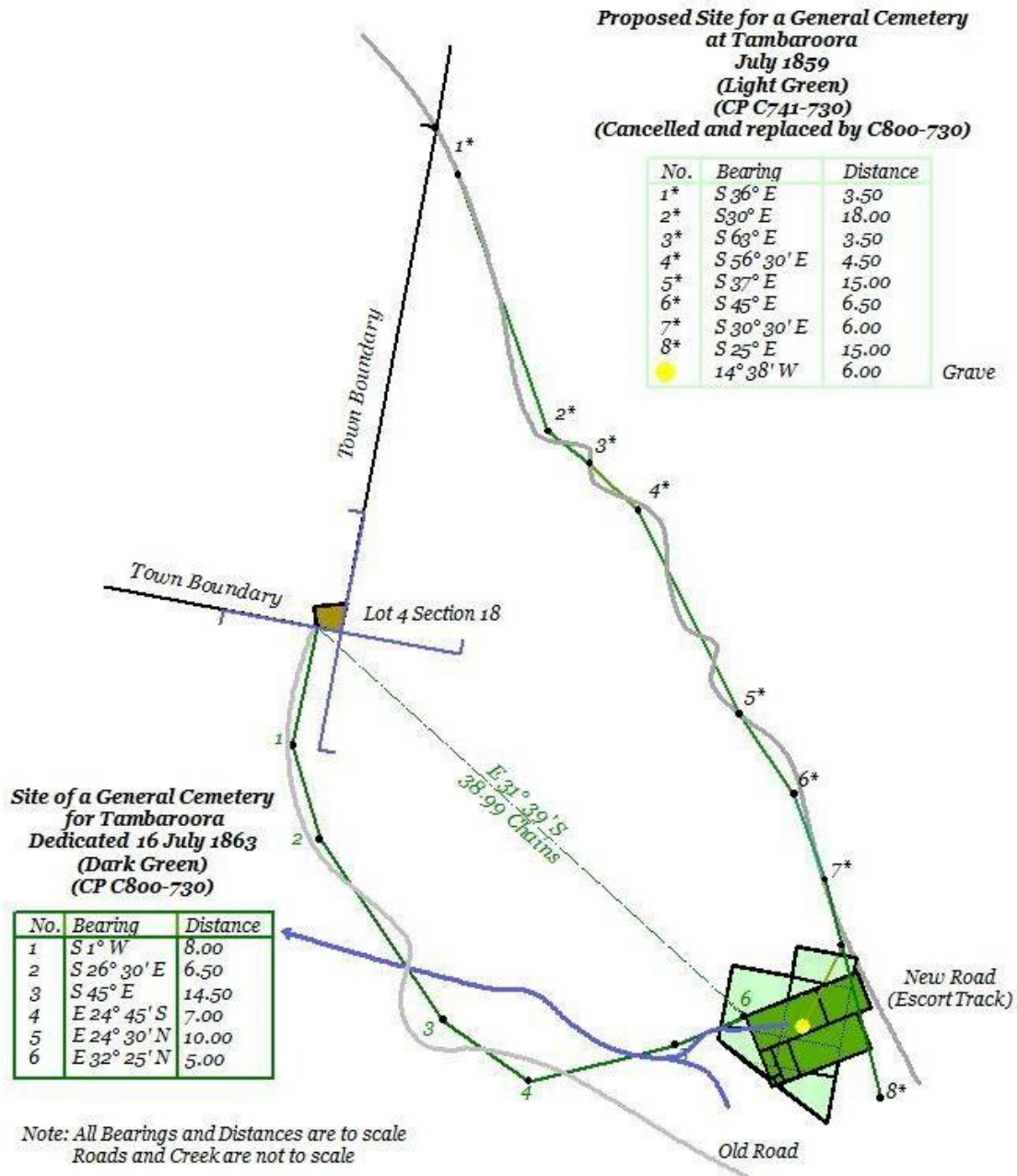
Friday, 26 November 2021

© Warwick P Taylor 2021 – tambaroora.com

corner of Lot 4 Section 18 within the town, there is also a direct trace line from Lot 4 Section 18 to the north west corner of the cemetery. Both measurements of the later cemetery confirm the accuracy of the Surveyors measurements, and those of the diagram below.

The grave mentioned previously was noted on CP 741-730 compiled in 1859, this is the only reference found. The accuracy cannot be determined due to a necessary measurement being omitted from the Crown Plan. Its position has been determined by using the scale indicated on the CP, this can only be used for an approximate position from point seven to the change of direction to the grave marked with the yellow dot. At the very least it is known that one grave exists within the cemetery, this maybe more coincidence than deliberate, when the first survey was undertaken for a proposed cemetery this grave was in situ so in all probability the grave preceded the survey²².

Figure 22 - Survey of the Cemetery's Location from the Town



Measurements for both Cemeteries

All angular measurements have been made using magnetic north and **NOT** true north. Magnetic Variation used is 10.6°

The roads and creek/gully paths are approximations as they were drawn freehand on the CP's

CEMETERIES OF THE TAMBAROORA

Friday, 26 November 2021

© Warwick P Taylor 2021 – tambaroora.com

Image compiled from Crown Plan 741-730 and 800-730
Reconstructed by Warwick P Taylor using an Autocad program - 2017

This Cemetery is mentioned in a table in the NSW Gazette of 1863²⁴ (see Figure 23),

Figure 23 - NSWGG Lands Dedicated for Public Use

COUNTY.	PLACE.	ALLOTMENT.	SECTION.	LOCALITY.	AREA.	TO WHAT PURPOSE APPROPRIATED.
Tambaroora	Wellington	1, 2, 3	16	2 0 0	Church of England Church, School, and
Do	do	2, 3, 4, and 5	12	2 1 8	Parsonage.
Do	do	About $\frac{1}{2}$ of a mile south-easterly from the town of Tambaroora.	3 3 0	National School. General Cemetery.

Image Courtesy of TROVE, National Library of Australia

the Cemetery according to the Gazette was to be located approximately $\frac{3}{4}$ mile south easterly from the town covering an area of 3 acres 3 roods 0 perches. As stated in the Gazette the distance was approximate, Google Earth Pro shows it as being only $\frac{1}{2}$ a mile as does the early charting maps, the size of the cemetery is identical to that given in the Gazette, 3 acres 3 roods 0 perches.

Figure 24 below uses Figure 22 above overlaid on the 1922 Hill End and Tambaroora Map using G, the cemetery is located on what was later to become Lot 208 in 1904 and Reserved for a Racecourse for the Hill End and Tambaroora Race Club.

²⁴ NSW Government Gazette, No.136, Pg.1547, dtd 16 Jul 1863

CEMETERIES OF THE TAMBAROORA

Friday, 26 November 2021

© Warwick P Taylor 2021 – tambaroora.com

Figure 24 - Composite Image of Surveyors Measurements overlaid on 1922 Hill End and Tambaroora Map



Compiled using Google Earth Pro by Warwick P Taylor – 2017
Map Courtesy of DIGS, NSW Resources and Trade

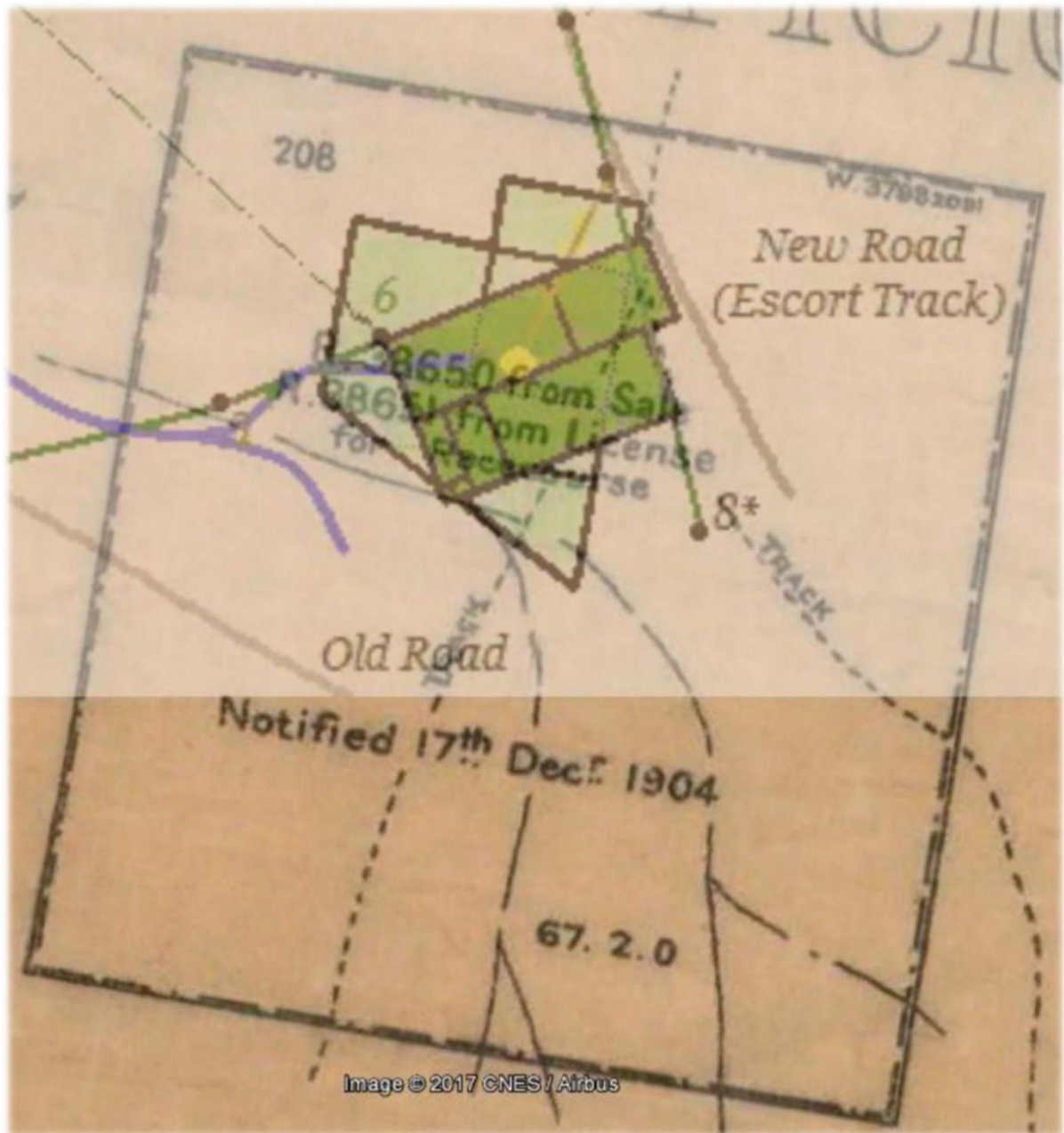
The following two images show the position of the Cemetery in relation to Lot 208 and the racecourse, and the position of the Cemetery overlaid on satellite imagery.

CEMETERIES OF THE TAMBAROORA

Friday, 26 November 2021

© Warwick P Taylor 2021 – tambaroora.com

Figure 25 - Lot 208 with the Cemetery (dark green shading) located within.



Extracted from the 1922 Hill End and Tambaroora Map
Compiled using Google Earth Pro by Warwick P Taylor – 2017
Map Courtesy of DIGS, NSW Resources and Trade

Figure 26 - Satellite Imagery showing the Cemetery overlaid on the actual ground.

CEMETERIES OF THE TAMBAROORA

Friday, 26 November 2021

© Warwick P Taylor 2021 – tambaroora.com



Created from Google Earth Pro by Warwick P Taylor – 2017

PLEASE NOTE

*This Cemetery site is now on private property and as such there is no access to the site.
Please respect the owners privacy.*

TAMBAROORA GENERAL CEMETERY - 1898

The survey plan of this cemetery (386.3090) notes that it was to be dedicated under the 104th Section of the Crown Lands Act of 1884. The site was surveyed in Jul 1897 and approved in Dec 1897, the

[land was withdrawn](#) from the Hill End and Tambaroora Temporary Commonage on the 19th Feb 1898²⁵ (see Figure 27), and was dedicated on the 8th Oct 1898²⁶.

Figure 27 - Withdrawal of Land from the Hill End and Tambaroora Temporary Commonage

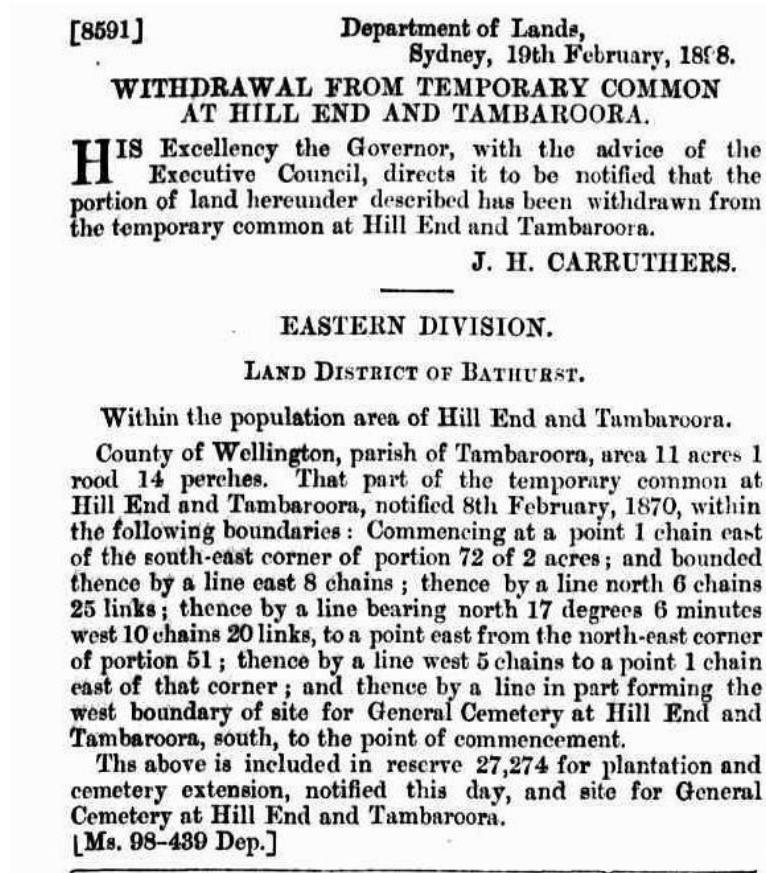


Image Courtesy of TROVE, National Library of Australia

As an adjunct to the General Cemetery, land was also reserved from sale for a Plantation and Extension to the Cemetery²⁵.

The image below shows the actual Cemetery without the addition of the Plantation, the Race shown in the bottom right of the image is still in existence and easily identified today.

Figure 28 - Layout of the Cemetery

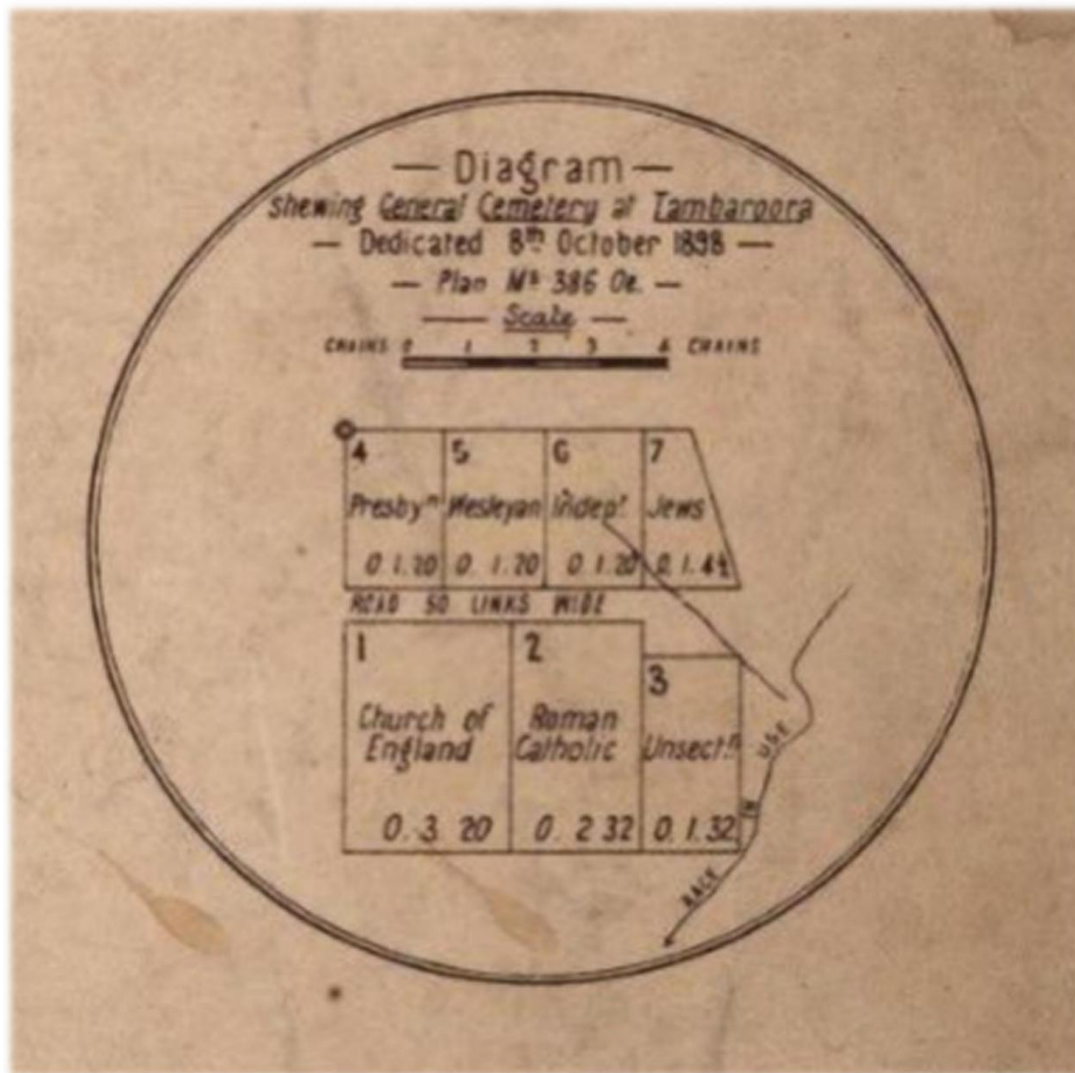
²⁵ NSW Government Gazette, No.147, Pg.1335, dtd 19 Feb 1898

²⁶ Parish Map of Tambaroora, 1899

CEMETERIES OF THE TAMBAROORA

Friday, 26 November 2021

© Warwick P Taylor 2021 - tambaroora.com



Parish Map of Tambaroora 1899
 Map Courtesy of NSW Land Registry Services

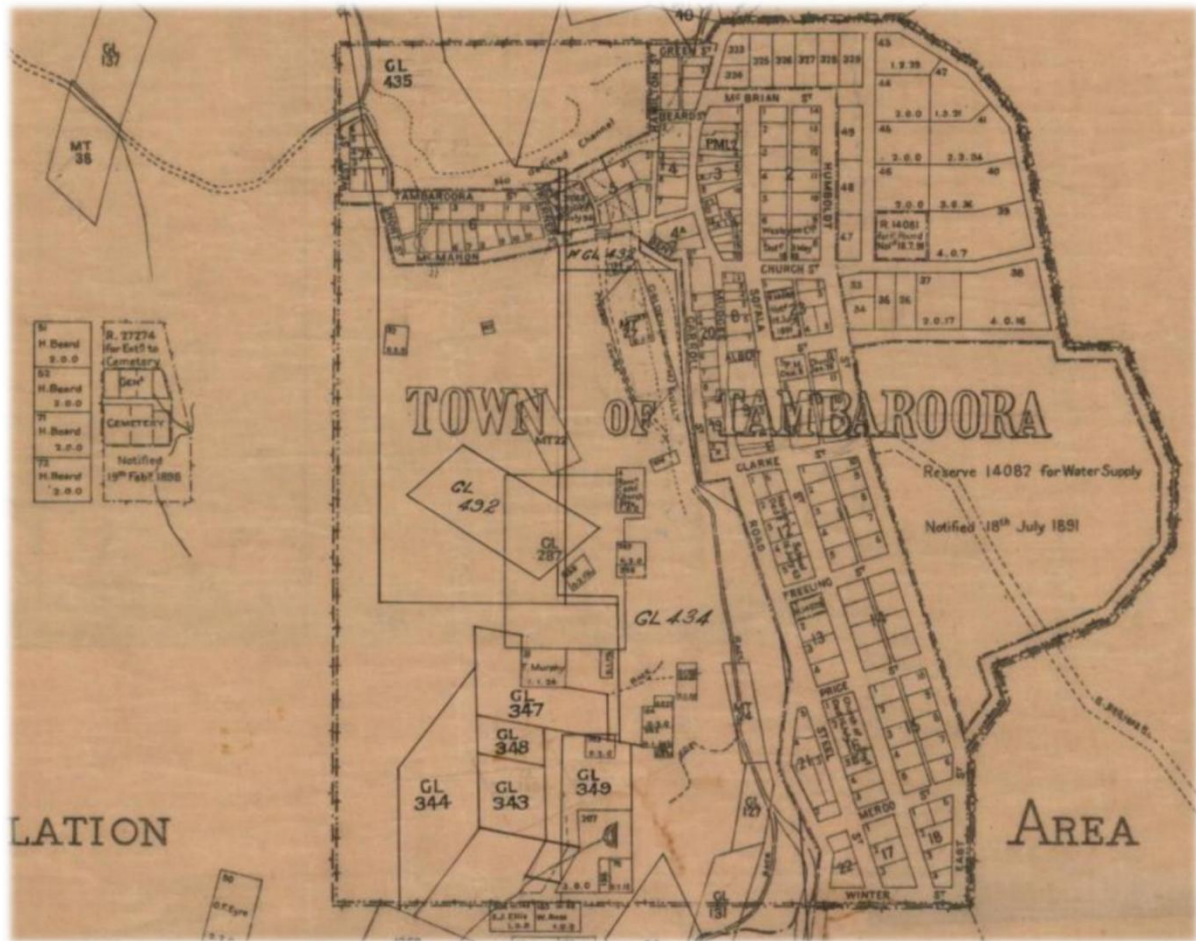
CEMETERIES OF THE TAMBAROORA

Friday, 26 November 2021

© Warwick P Taylor 2021 – tambaroora.com

Layout and Location of the General Cemetery in the western area of Tambaroora (centre left of image)

Figure 29 - Location of the General Cemetery



Map Courtesy of NSW Land Registry Services

The proposed Appropriations for the denominations were:

Church of England - 3 roods 20 perches

Roman Catholic - 2 roods 32 perches

Unsectarian - 1 rood 32 perches

Presbyterian - 1 rood 20 perches

Wesleyan - 1 rood 20 perches

Independent - 1 rood 20 perches

Jews - 1 rood 4 ½ perches

Trustees were appointed in 1898 for both the Wesleyan²⁷ (see Figure 30) and the Church of England²⁸ portions of the General Cemetery.

²⁷ NSW Government Gazette, No.1079, Pg.9777, dtd 17 Dec 1898[5697]

²⁸ NSW Government Gazette, No.1111, Pg.10022, dtd 28 Dec 1898[6074]

Figure 30 - Wesleyan Trustees Appointed

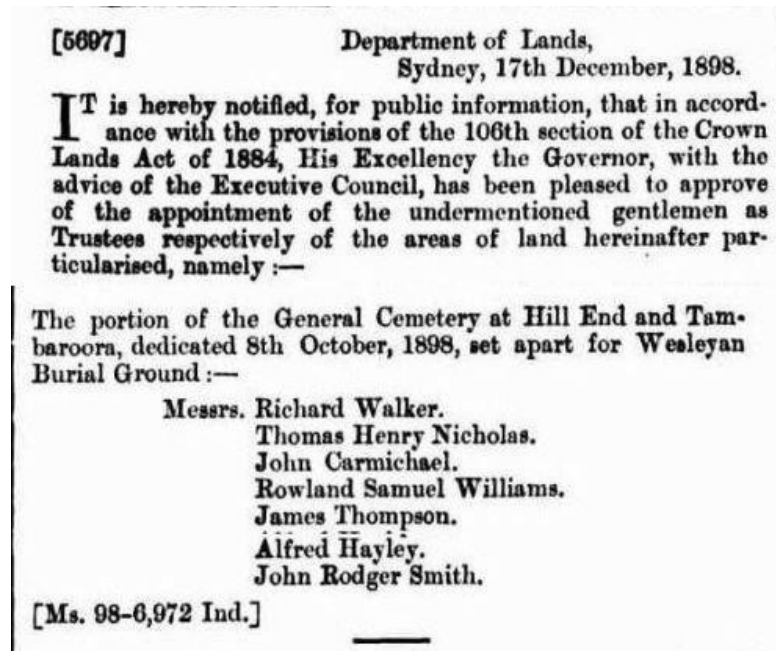


Image Courtesy of TROVE, National Library of Australia

Figure 31 - Church of England Trustees Appointed

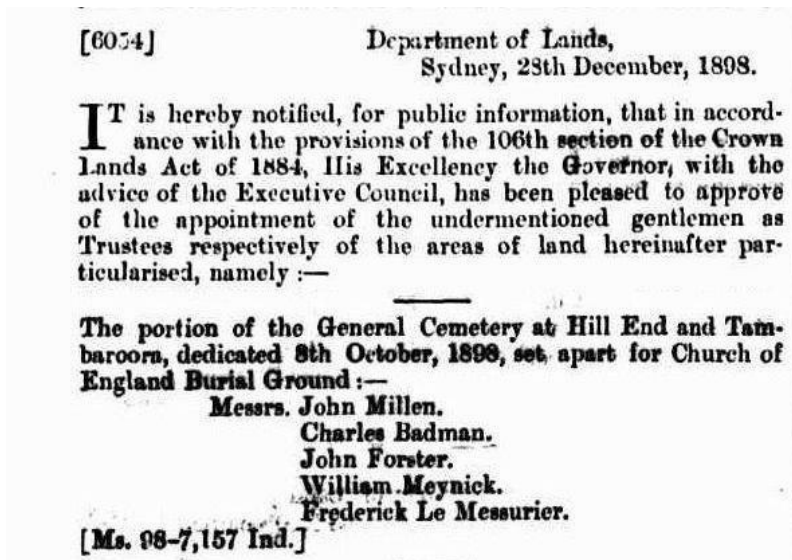


Image Courtesy of TROVE, National Library of Australia

It is worth noting that 30 years after the appointment of Frederick Le Meaurier as a Trustee of the Church of England portion of the General Cemetery it was gazetted that he was removed from the list of Trustee's.

In 1929 this General Cemetery was inadvertently "fixed" by a Corporate Body from Bathurst unaware that it was the intention to fix the Cemetery located on Steele Street which was formerly the Church of England's Graveyard when the first church was located on the site from 1854 to 1871. The Steele Street Cemetery had always been referred to as the Church of England Cemetery hence the error. This and the non-denominational burials made in the past in the Steele Street Cemetery

CEMETERIES OF THE TAMBAROORA

Friday, 26 November 2021

© Warwick P Taylor 2021 – tambaroora.com

eventually led to approaches being made to have the Steele Street Cemetery made into the General Cemetery. The change from Church of England Cemetery to the Tambaroora General Cemetery occurred in 1951.

PIONEER CEMETERY - 1852

Unknown Denomination

Identifying the Location

Apart from the Church of England graveyard and the Catholic cemetery there are several references made to another cemetery, aka the burying ground or burial ground between 1852 and 1859.

- *A letter from a committee formed by the Church of England (C of E) residents of Tambaroora dated October 1852 making application for an allotment of land for the erection of a Church and School, included in the application was also for a piece of land presently being used as a burial ground, there already being 10 interments within the ground. Although no location is noted for this burial ground it precedes the first known graveyard created by the C of E in 1854 by at least 18 months. No other mention is made relating to the resident request for the burial ground, their application was approved only for land for a Church, School and Parsonage, even the location requested was changed from behind the Barracks to further out of town to the future Section 16 as eventually surveyed in 1859. One could only assume that for the C of E residents to request this burial ground they had knowledge of those who were interred in it and their faith. ⁽⁵¹¹⁾*
- *An article in the Sydney Morning Herald describing the finding of a [deceased Chinaman](#) approximately 300 yards behind the burying ground near Mr. Cullen's slaughtering yard. Another article in the Maitland Mercury and Hunter River General Advertiser describes the location of the Chinaman [found deceased](#) behind Cullen's slaughtering yard.*

Three slaughter yards have been identified in the town in 1858 but only one appears to fit the description given in the above newspaper articles. The boxed area in the top right of Figure 1 below is noted as being a slaughter yard in the 1859 plan. The Sydney Morning Herald article notes the person was found deceased 300 yards behind the burying ground near Cullen's slaughter yard, the distance from the cemetery (burying ground) to Cullen's slaughtering yard is approximately 220 yards but the second article from the Maitland Mercury notes the deceased person was found behind Cullen's slaughter yard putting a greater distance between the cemetery (burying ground) and the deceased person. Not knowing the distance that the deceased person was behind Cullen's slaughter yard from the second article it could be considered that the approximate distance of 300 yards from the burying ground is feasible.

What I have found is that in articles describing locations in and around town, the word "behind" has been used to describe a site or event that is further from the centre of town than the site being used as the reference e.g., "the Watch House is located behind the Railway Hotel", indicating the Watch House is not only behind but is also further away from the centre of town than the Railway Hotel is.

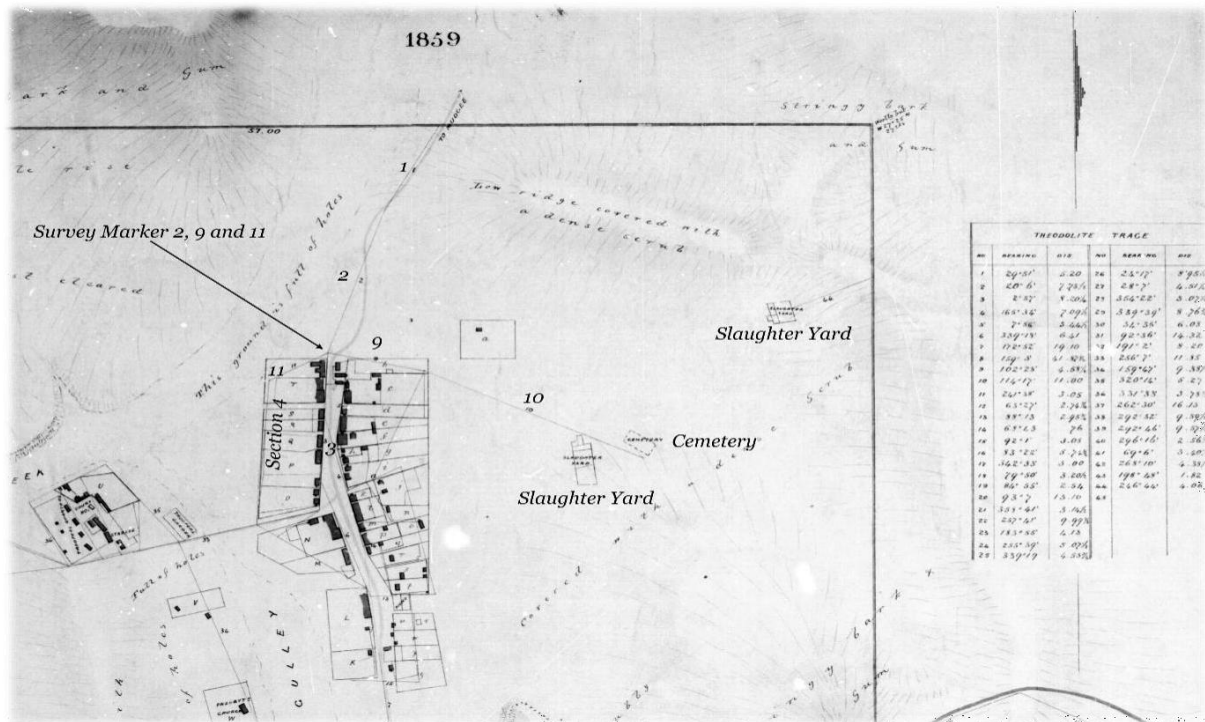
- *Another reference found is the 1859 Town Plan by Surveyor Price, this shows the location of a cemetery and is notated as such, see Figure 1 below. The purpose of this 1859 Plan was to formalize the layout of the town in preparation for its naming in 1860. The Plan shows the result of Surveyor Prices efforts, what he saw on the ground at the time is what he reproduced in this Plan. Hence the cemetery and slaughter yards were in situ at the time of the survey.*

CEMETERIES OF THE TAMBAROORA

Friday, 26 November 2021

© Warwick P Taylor 2021 – tambaroora.com

Figure 32 - A cropped area of the 1859 Plan showing proposed allotment boundaries for the Town



The survey marker used in Figure 32 for survey lines 2, 9 and 11 no longer exists, it was a casualty of a hydraulically sluiced area. No trace on ground has been found of a replacement. All subsequent plans produced in 1859 and 1860 show the cemetery in the same position, this is the result of copying from the original 1859 map and the area not being re-surveyed, these later maps show the shape of the cemetery and the slaughter yards but none note them by name. Later charting plans do not show the cemetery.

The New South Wales Government Gazette, Issue No.119, Pg.97 dtd 11 Oct 1850, "No. XXX. An Act to amend the Law relating to the Slaughtering of Sheep, Cattle, and other Animals within certain Towns in the Colony of New South Wales, and for the prevention and removal of certain Nuisances therein" states that Slaughter yards are no longer to operate within a Towns boundary, established Slaughter Yards were able to continue but their licenses would not be renewed after 5 years. This could be why the names no longer appeared on the Town maps.

- August 2018** - The Hill End Story, Book One, by Harry Hodge, 1973, notes in chapter five, Pg.25 the establishment of a Boiling Down Works by one of the Treweek brothers in Tambaroora, the purpose of the works was to process stock either injured or unmanageable whilst en route to market. It was located on a hillock west of the "current" cemetery. Depending on the age of the authors source the cemetery mentioned could be the Pioneer Cemetery. To clarify this, if the authors source material is dated between the 1840s early 1850s then the cemetery mentioned would be the pioneer cemetery as it is shown on Prices 1859 Town map due east of a slaughter yard (Boiling Down Works) as can be seen in Figure 1. Hodge may not have been aware of the existence of the pioneer cemetery and assumed that the mention made of the cemetery was to the former Church of England Cemetery now the General Cemetery.

CEMETERIES OF THE TAMBAROORA

Friday, 26 November 2021

© Warwick P Taylor 2021 – tambaroora.com

The Chapter also noted that two skeletons were found buried on the site many years previous, I am assuming that the "many years previous" is referring to a period prior to the books publication. The skeletons were re-buried on orders of the Police. These skeletons would have been interments in the Cemetery which would have remained unknown to those who later found the remains. Again, Hodge may have assumed that the reference to the Cemetery was to the current General Cemetery.

A search of the NSW Police Gazettes for the period 1881 to 1940 did not reveal any mention of skeletons found in the Tambaroora District. (The search used was a name search "skeleton" on the PDF files)

No mining activity has been identified in this area, the Tambaroora and Turon River Gold Field Map of 1877 does not show any Leases being applied for or issued. Later mining applications from post the 1874 Mining Act again show no activity in the area. In 1893 the area was surveyed by Surveyor Blackett for the development of suburban lots in the north east corner of the town. No indication of the cemetery is shown nor is any mention made in his survey notes. The area does appear to have a history of slaughter yards with the addition of two other yards either still operational at the time of the 1893 survey or their remnants were visible to the Surveyor, these yards are positioned just to the east of where the cemetery is located. This could indicate that the cemetery area has been well trodden by stock movement over the preceding years.

Using the scale on the 1859 Plan the measurement of the cemetery is 90 feet x 45 feet or 136 links x 68 links, again GEP has been used to determine the size.

Known Early Deaths at Tambaroora

21st Jun 1852 - [Death](#) - [Stephen PRICE](#)

Surveying the Site

Figure 33 - Satellite image of the Town and area of Interest - (Google Earth Pro [GEP])



CEMETERIES OF THE TAMBAROORA

Friday, 26 November 2021

© Warwick P Taylor 2021 – tambaroora.com

The image below shows a close up of the area of interest taken from Surveyor Prices 1859 Town map.

Figure 34 - Cropped area of the 1859 Town Map of Tambaroora showing the area of Interest (Surveyor Price)

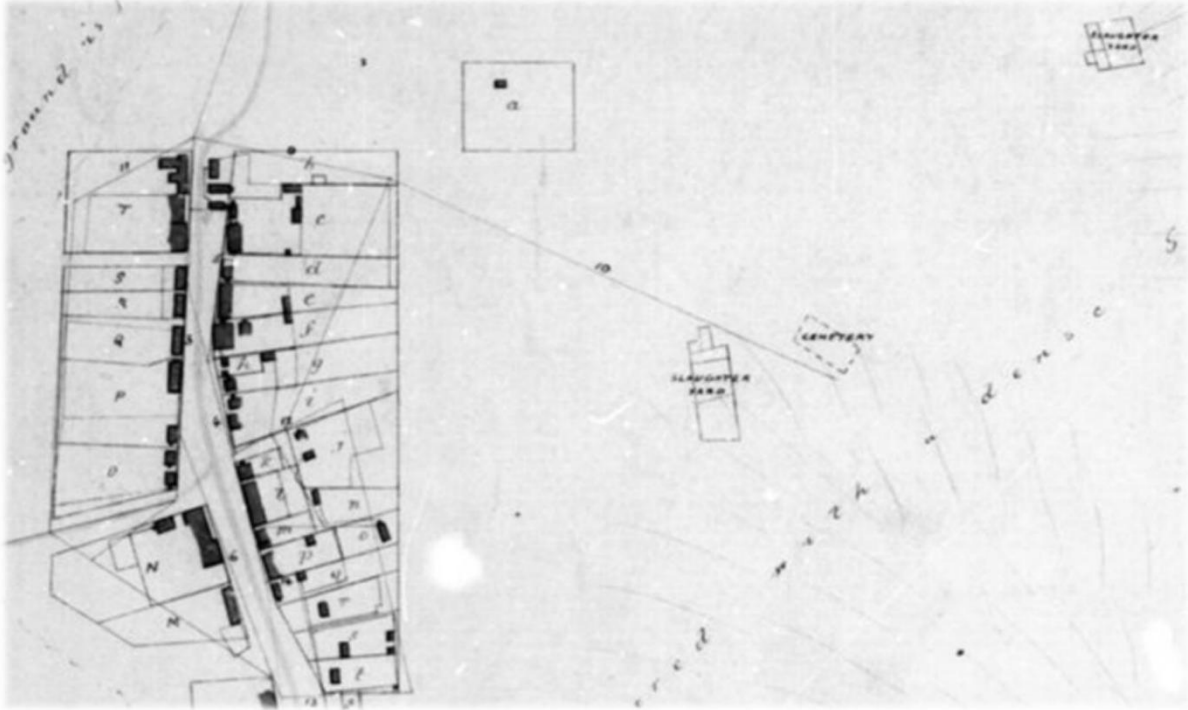
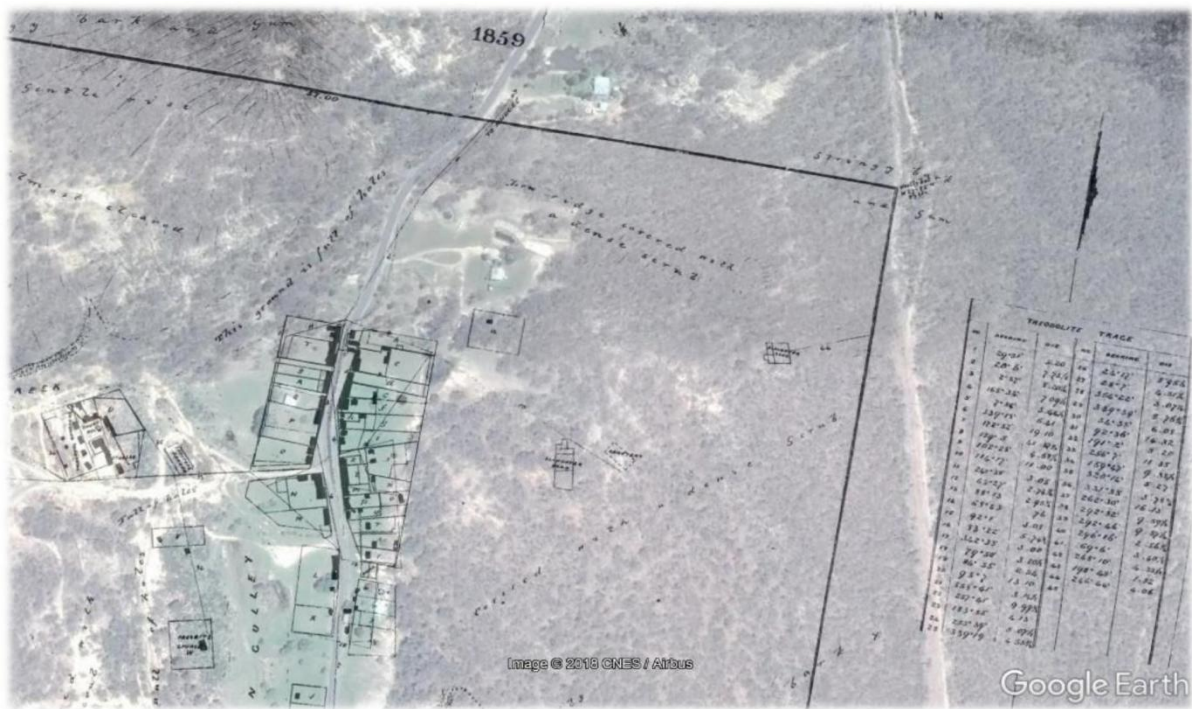


Figure 35 - This image shows the 1859 town map overlaid on the GEP satellite image



CEMETERIES OF THE TAMBAROORA

Friday, 26 November 2021

© Warwick P Taylor 2021 - tambaroora.com

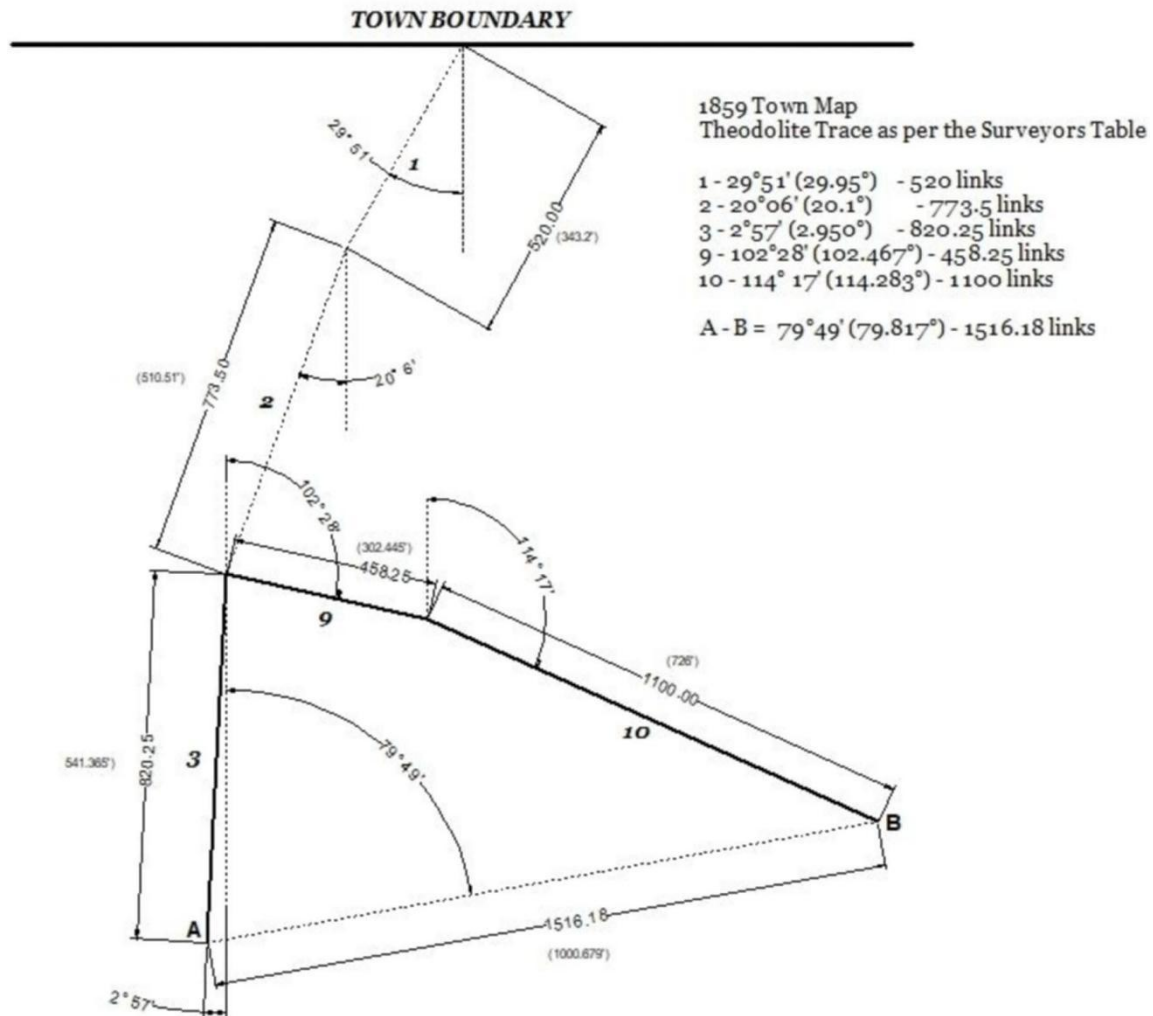
Certain manmade features are still in existence and can be identified on both the GEP satellite image and the 1859 town map, in particular Lots 5 and 6 of Section 4 (Hodges property), Lot 5 of Section 6, Lots 1, 2, 3 and 4 of Section 8 and the Church of England site on Lot 2 Section 16. These points allowed to accurately site the overlay map on the GEP satellite image, and confirmed the magnetic variation for circa 1859.

To determine the location of the pioneer cemetery(PC) I used the surveyors table of measurements (see Figure 5) to create a drawing to reflect those measurements which appear to be specific to finding the site of the PC, see Figure 6.

Figure 36 - Table of Measurements for the 1859 Tambaroora Town Plan

THEODOLITE TRACE					
NO	BEARING	DIS	NO	BEARING	DIS
1	29°51'	5.20	26	24°17'	8.95½
2	20°6'	7.73½	27	28°7'	4.51½
3	2°57'	8.20¼	28	354°22'	3.07¼
4	165°34'	7.09½	29	339°39'	8.76¾
5	7°56'	3.44½	30	34°35'	6.08
6	339°15'	6.41	31	92°36'	14.32
7	172°52'	19.10	32	191°2'	8.20
8	159°3'	41.87¾	33	256°7'	11.85
9	102°28'	4.58¾	34	159°47'	9.38½
10	114°17'	11.00	35	320°14'	5.27
11	241°38'	3.05	36	331°33'	3.78¾
12	63°27'	2.74¾	37	262°30'	16.13
13	88°13'	2.95¾	38	292°32'	9.59½
14	68°43'	76	39	292°46'	9.57¼
15	92°1'	3.03	40	296°16'	2.56¾
16	83°22'	5.74¾	41	69°6'	3.40½
17	342°33'	3.00	42	268°10'	4.38½
18	79°50'	3.20½	43	198°48'	1.82
19	84°55'	2.54	44	246°44'	4.06
20	93°7'	13.10	45		
21	355°41'	3.14½			
22	257°41'	9.99¾			
23	183°55'	4.13			
24	255°39'	5.07½			
25	339°19'	4.53¾			

Figure 37 - CAD drawing showing the measurements obtained from the surveyors table



The drawing was then overlaid on the 1859 town map in GEP and manipulated to match the magnetic variation and layout of the town. Particular attention was paid to the following in Figure 7, the "TOWN BOUNDARY" line from the CAD drawing matched the 1859 maps town boundary, the eastern boundary of Section 4 and Line No.3 in the CAD drawing were in alignment as this represented an existing manmade feature of a straight line being the front boundary fences of Section 4, and all measurements were checked using the measuring tool in GEP to ensure that the measurements produced by GEP matched those of the drawing, this confirmed that the overlay was to the correct scale and orientation.

CEMETERIES OF THE TAMBAROORA

Friday, 26 November 2021

© Warwick P Taylor 2021 – tambaroora.com

Figure 38 - This image shows the above CAD drawing overlaid on GEP and scaled to match GEP scale.



Line 3 = 820.25 links / 541.365 feet - Line 9 = 458.25 / 302.445 feet - Line 10 = 1100 links / 726 feet

The figure below shows a close up view of the CAD drawing and the 1859 Town Map overlaid on GEP and scaled to match GEP scale. The red lines were input by GEP from the CAD drawing and as can be seen they overlay exactly the lines shown on the 1859 map, this speaks volumes as to the accuracy of the Surveyors measurements and scaling of the images. The only exception is the end of Line 10 shown at "B", on the 1859 map it overshoots the red line by 12 feet.

Figure 39 - Close up view of the CAD drawing and the 1859 Town Map overlaid on GEP



The end result being a location at the end of Line 10 at point "B" Lat: -32.996666° Long: 149.427521°, which I can only assume is for the cemetery, from the close up image above it can be seen that Line 10 does not go to a survey marker that is in contact with the cemetery. In attempting to site the cemetery accurately all that could be done was to measure the distance and angle from the end of Line 10 at point B to what I could only assume was the centre of the cemetery marked on the map.

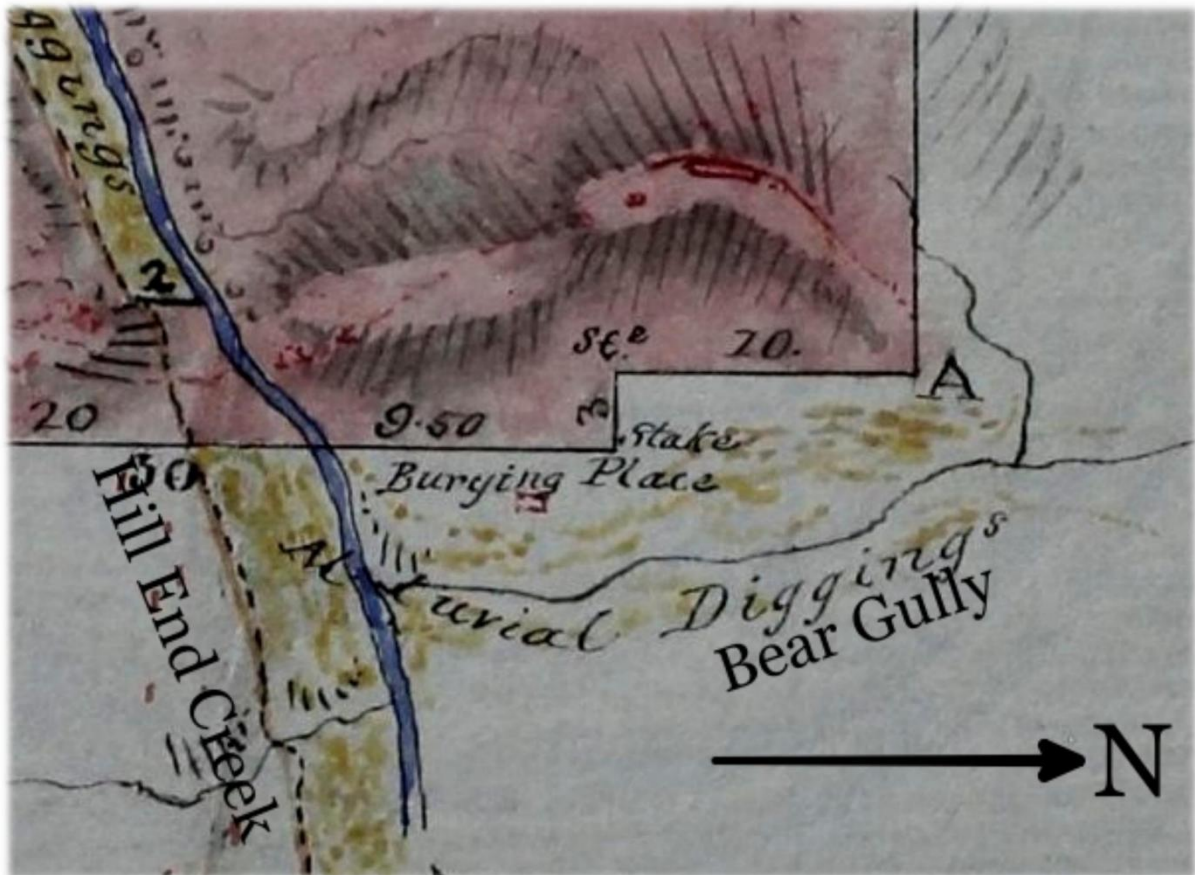
To date (2018) no Surveyors Notebook has been found for Surveyor Prices survey of the Town.

BALD HILLS CEMETERY

Numerous mentions have been made about this cemetery, parish, village maps and gold lease plans show its location. It is situated on or under Warrys Road just past the village camping ground, its beginning is unknown as are its size and number of internments. Expansion of the alluvial fields immediately surrounding it would have seen its closure.

The 1855 plan below of S.B. Sergeants quartz claim notes a “burying place” on the plan to the west of what was known as Bald Hill Creek²⁹, now known as Hill End Creek.

Figure 40 - 1855 Quartz Claim showing the burying place



²⁹ Plan of 160 acres in the County of Wellington, head of Bald Hill Creek embracing Wythers now Sergeants Quartz Claim, 20 Feb 1855

CEMETERIES OF THE TAMBAROORA

Friday, 26 November 2021

© Warwick P Taylor 2021 – tambaroora.com

The portion of the 1859 Village of “Forbes” map below shows its location to the west of the village overlooking an unnamed creek which was to be later known as Bear Gully³⁰.

Figure 41 - 1859 Village of Forbes Plan



³⁰ Plan, Shewing the proposed boundaries for a village at the Bald Hills, and the arrangement into blocks of improvements within them, 1859 now village of “Forbes”

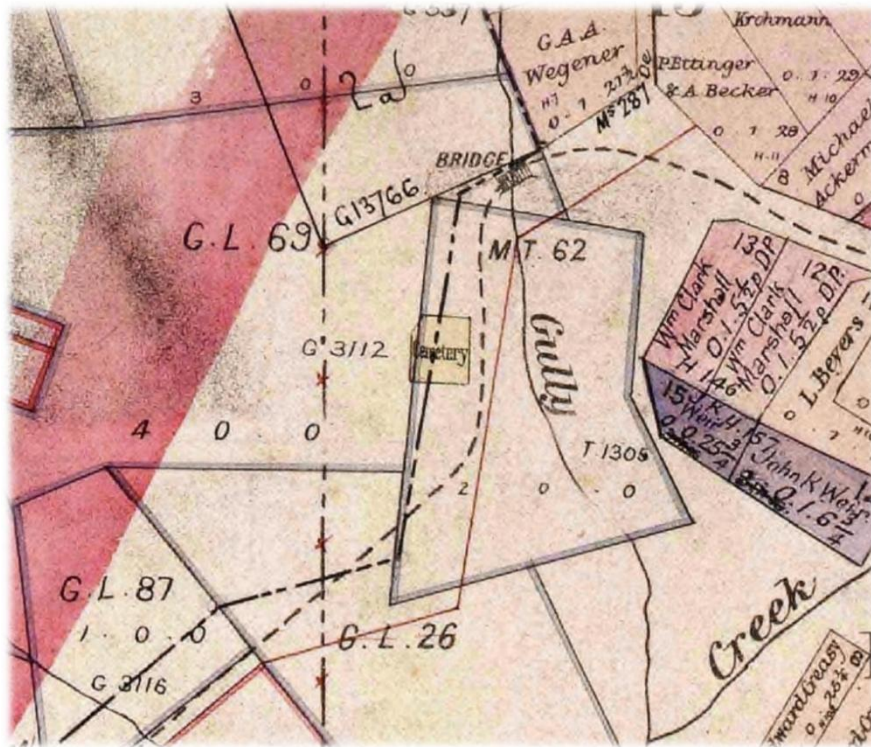
CEMETERIES OF THE TAMBAROORA

Friday, 26 November 2021

© Warwick P Taylor 2021 – tambaroora.com

The 1894 Village map below shows the cemetery sited to the west of the track

Figure 42 - 1894 Village Map showing the Cemetery and track passing to the east of it



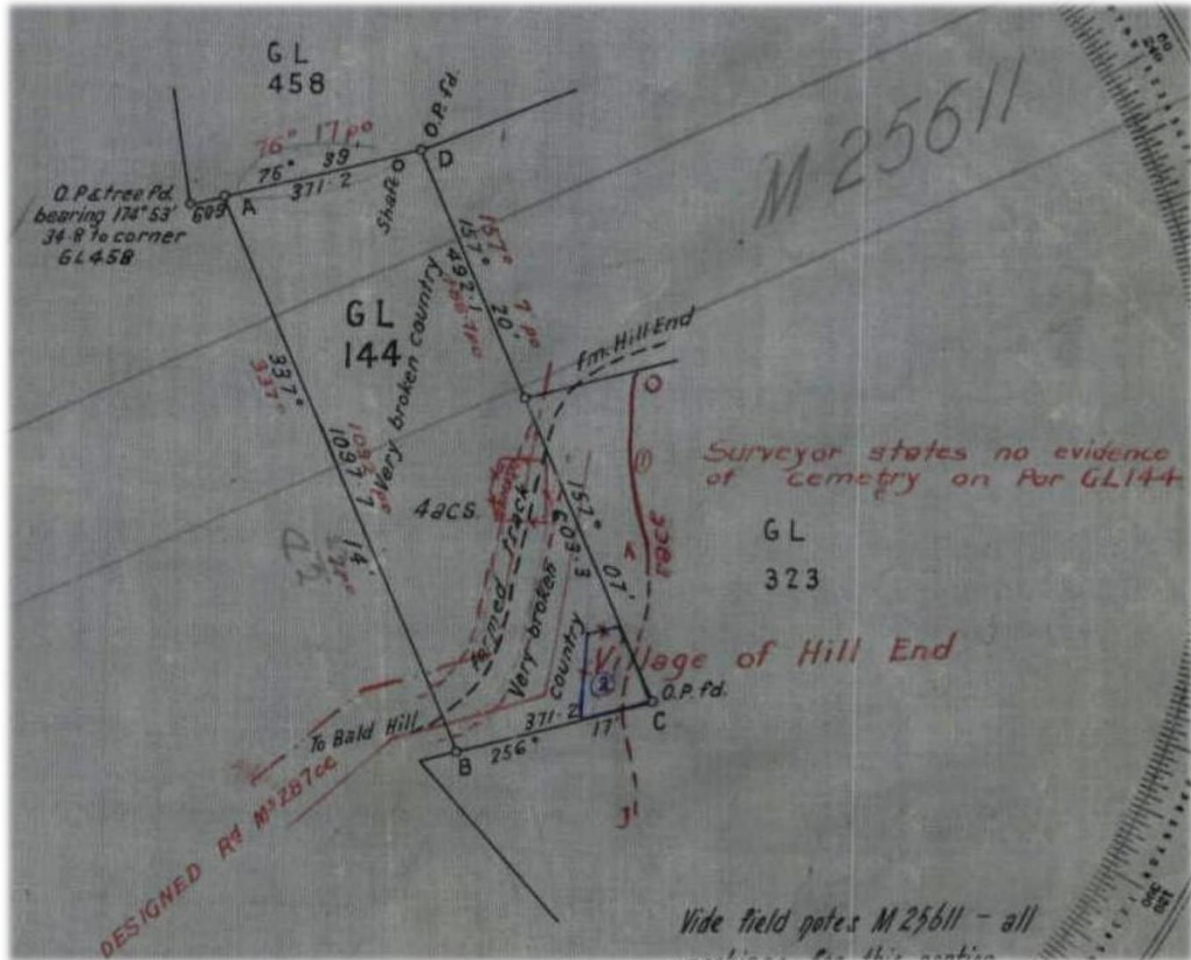
CEMETERIES OF THE TAMBAROORA

Friday, 26 November 2021

© Warwick P Taylor 2021 – tambaroora.com

An application for a Gold Lease No.144 below shows in red the cemetery but is annotated by the surveyor that there was no evidence of cemetery on Portion GL 144. Although, interestingly the surveyor has noted on the application that the Cemetery area was about twelve perches³¹. The survey has also shown a formed track from Hill End, also a designed road (Ms.287cc) both of which pass over the site of the cemetery.

Figure 43 - Gold Lease 144 Application showing the cemetery



Erosion from Bear Gully has seen a later change in the roads path with it moving slightly to the west which appears to have encroached more on the cemetery. There are reports that flash flooding eroded the banks of the gully to such an extent that it exposed coffins, some of which were washed away.

³¹ Gold Lease Application GL144, dated 12 May 1951

HILL END CEMETERY

Land was withdrawn from the Hill and Tambaroora Temporary Common in 1874 for a Cemetery to be sited on the Bathurst Road near present day "Sarnia". The Government Gazette notification below details its location. Figure 37 shows the siting of the Cemetery.

It can only be assumed that it was never used as no records indicate otherwise.

Figure 44 - NSWGG, No.188, Pg.2341, dtd 29 Jul 1874 [1590] – TROVE, National Library of Australia

[1590]

Department of Lands,
Sydney, 29th July, 1874.

**WITHDRAWAL FROM TEMPORARY COMMON AT
TAMBAROORA AND HILL END, FOR CEMETERY
AT HILL END.**

HIS Excellency the Governor, with the advice of the Executive Council, directs it to be notified, that the portion of land hereafter described has been withdrawn from Temporary Commonage at Tambaroora and Hill End, for Cemetery at Hill End.

JAMES S. FARNELL.

County of Wellington, parish of Carroll, 8½ acres. The portion of Temporary Commonage, Tambaroora and Hill End as notified 8th February, 1870, within the following boundaries: Commencing at a point east 8 degrees 5 minutes south, and distant 2 chains 15½ links from the south-west corner of A. Le Messurier's portion 56 of 2 acres; and bounded on the north by a line east 8 chains; on the east by a line south 10 chains 38 links; on the south by a line west 8 chains; and on the west by a line north 10 chains 38 links, to the point of commencement.

[Ms. 73-6,907]

© Warwick P Taylor 2021 – tambaroora.com

[illegible]

CEMETERIES OF THE TAMBAROORA

Friday, 26 November 2021

© Warwick P Taylor 2021 – tambaroora.com

The End